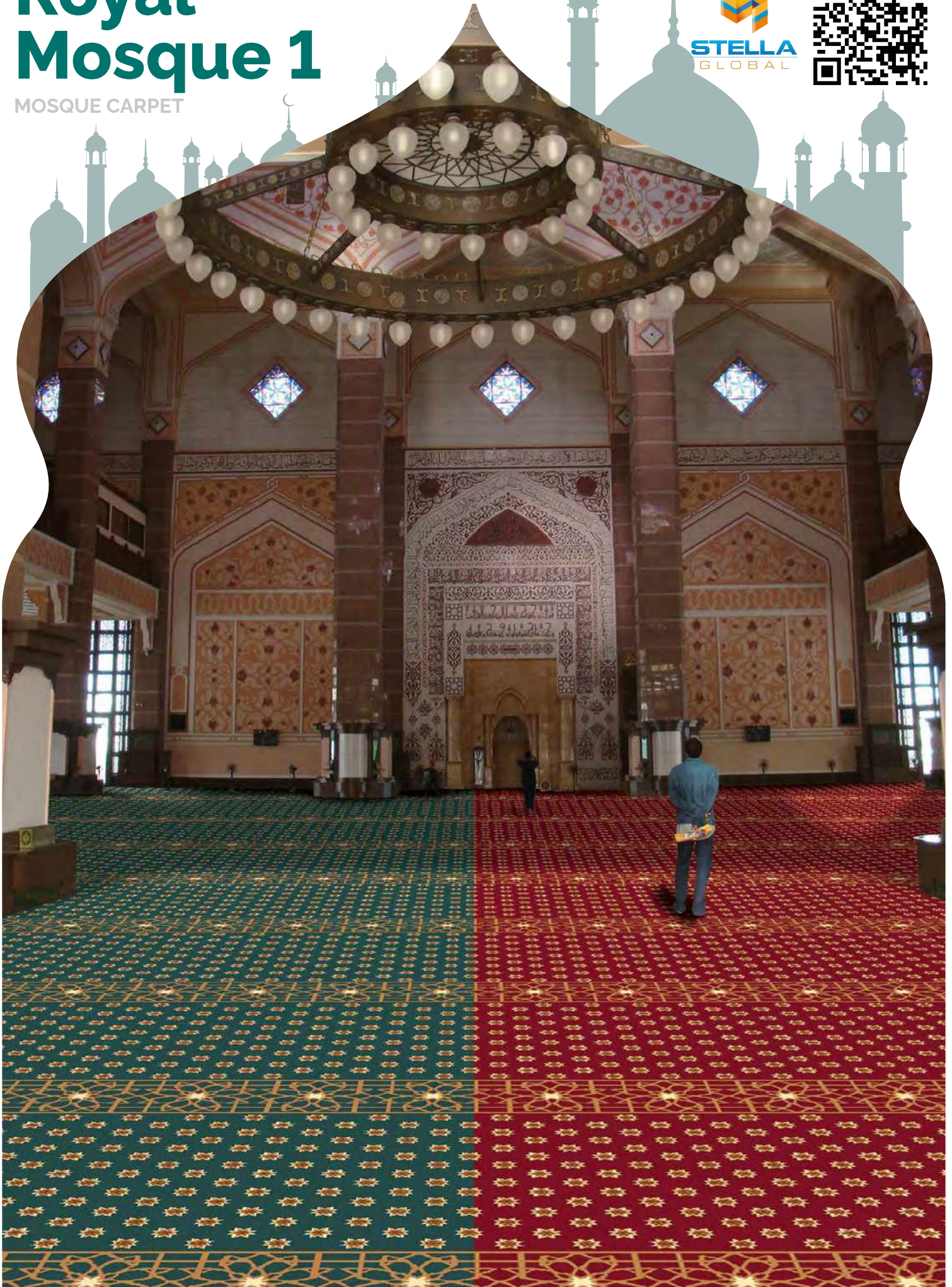


Royal Mosque 1

MOSQUE CARPET



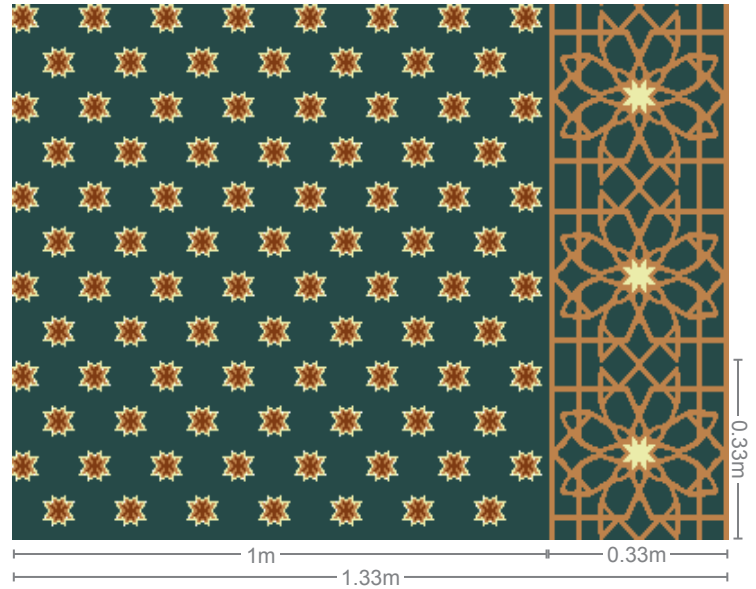
VISIT WEBSITE



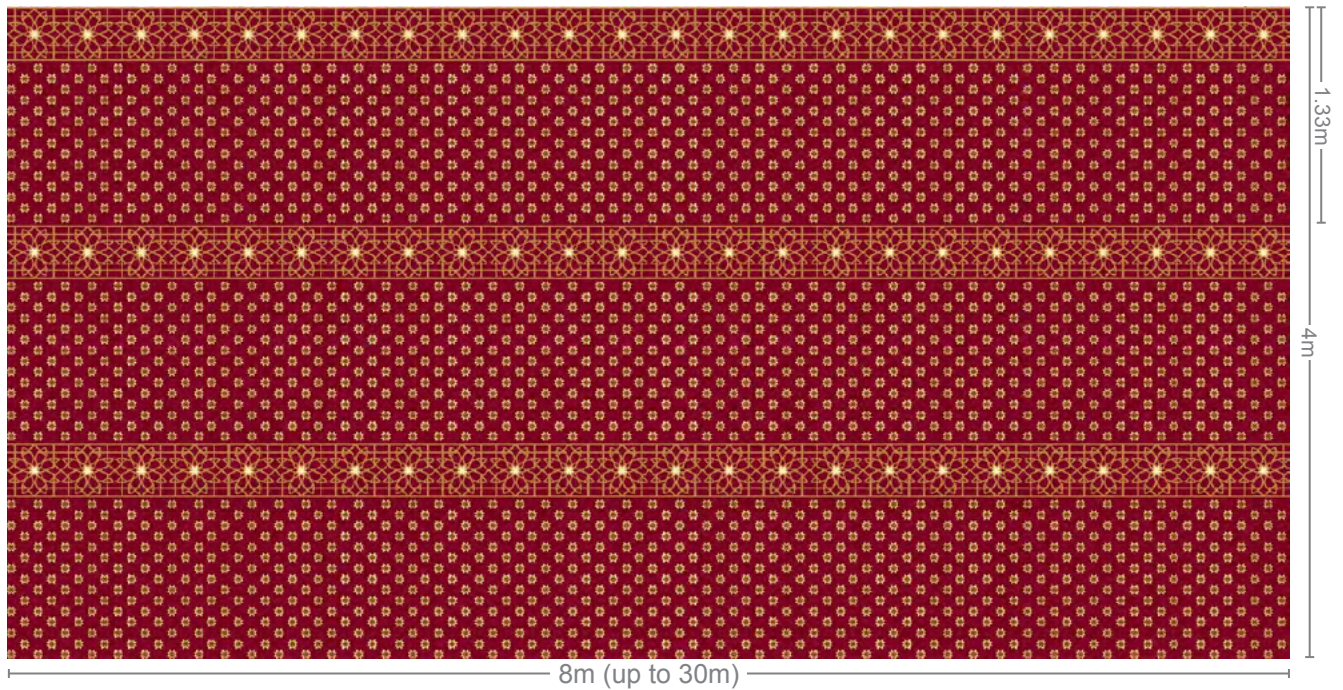
F1004 Red



F1011 Green



Roll Size



ROYAL MOSQUE 1 Specifications

| | |
|---------------------|--|
| Construction | Wilton Weave |
| Yarn Composition | 100% Solution Dyed Heatset Polypropylene |
| Total Weight | ca. 2150 g/m ² (63 oz/yd ²) (+/- 10%) |
| Total Height | ca. 7 mm (+/- 0.3 mm) |
| Density | 333,200 points/m ² |
| Standard Roll Size | 4m (+/-2%) x 30m (+/-2%) |
| Pattern Repeat Size | 1.33 m x 0.33 m |

Performance

(as tested by ITTS Inc. USA)

| | |
|-------------------------|---|
| Stain Resistance | 10 (AATCC-175-2003) |
| Static Control | Pass - Max. 4 kV (AATCC 134-1996) |
| Tuft Bind | Pass - 4.3 lbs (ASTM-D-1335) |
| Dimensional Stability | Pass - Max. 0.2% change (AACHEN) |
| Flammability | Pass - 8 (ASTM-D-2859-06) |
| - Pill Test | Pass - Max. 450 (ASTM-E-662-06) |
| - Smoke Density | Pass - Low Radius Of Effects Of Ignition (BS4790) |
| - Hot Metal Nut | |
| Colourfastness | Excellent - 5 (AATCC-16E) |
| - to light | Wet - 4, Dry - 3 (AATCC-165) |
| - to wet & dry crocking | Excellent - 5 (AATCC-129) |
| - to ozone | |

Warranties

10 Year Carpet Wear Warranty
Lifetime Antishock Carpet Warranty

Recommended Usage:

Ensure the subfloor is dry, smooth, flat, dust-free, compression resistant, and load-bearing. Use seam sealant if seams are necessary in installation. Due to dye lot variations, colors may slightly differ from samples. Chair pads are recommended to reduce carpet wear.

Ideal for Mosque Use.



ISO9001:2000
ISO14001:2004



EU CU Certificate



Advanced International
Carpet Alliance
for Environmental
Stewardship



Environment-Friendly
Carpet Certificate



Ecological



Anti-Static



Soil Repellent



No Dust Fibres



Resilient



Non Inflammable



Pin Pointed



Anti Bacteria



Colour Fast



Water Repellent

MOSQUE
CARPET