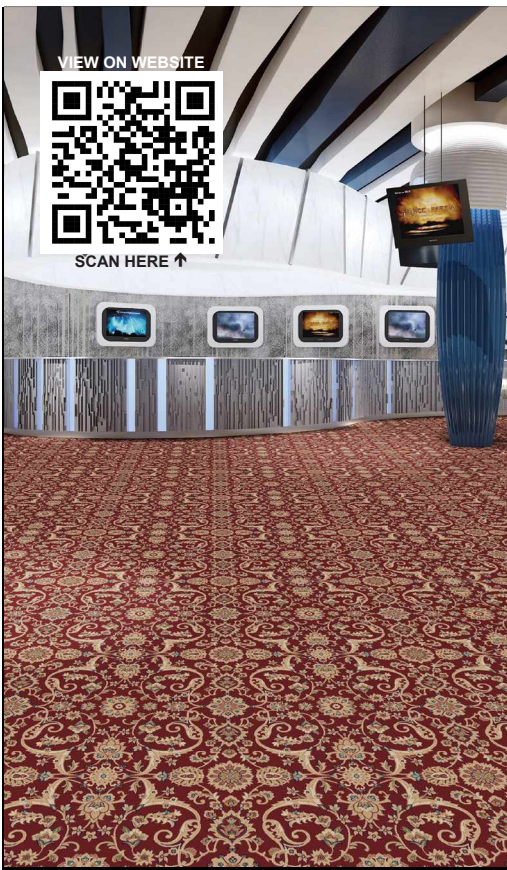


VIEW ON WEBSITE

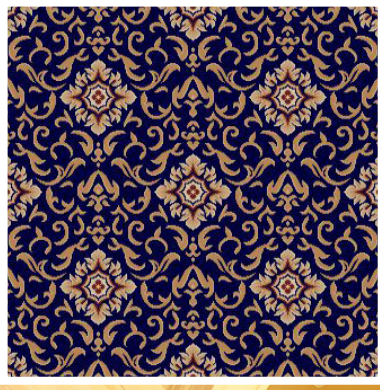


SCAN HERE ↑

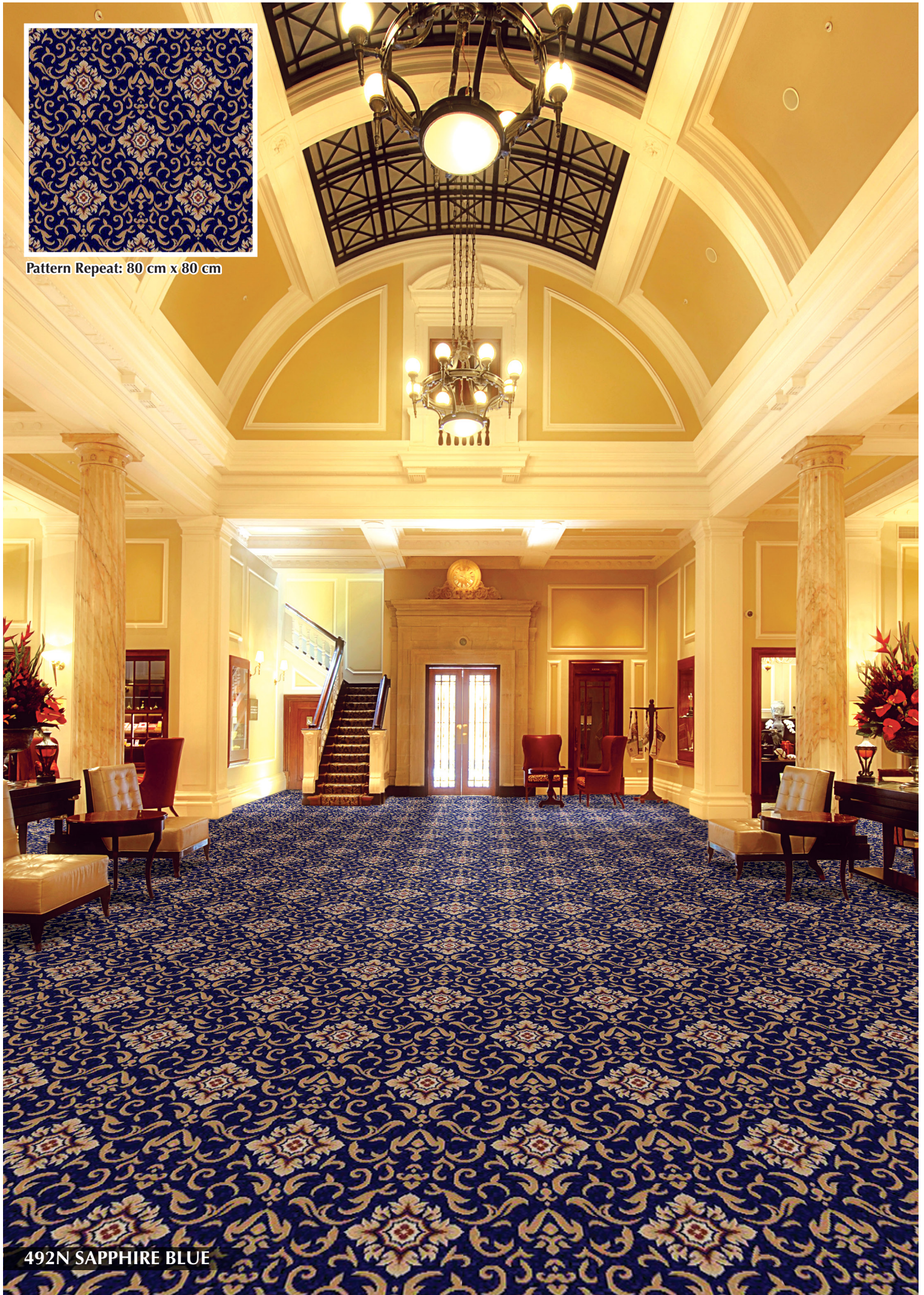


Classique Wilton™





Pattern Repeat: 80 cm x 80 cm



492N SAPPHIRE BLUE



Pattern Repeat: 100 cm x 100 cm

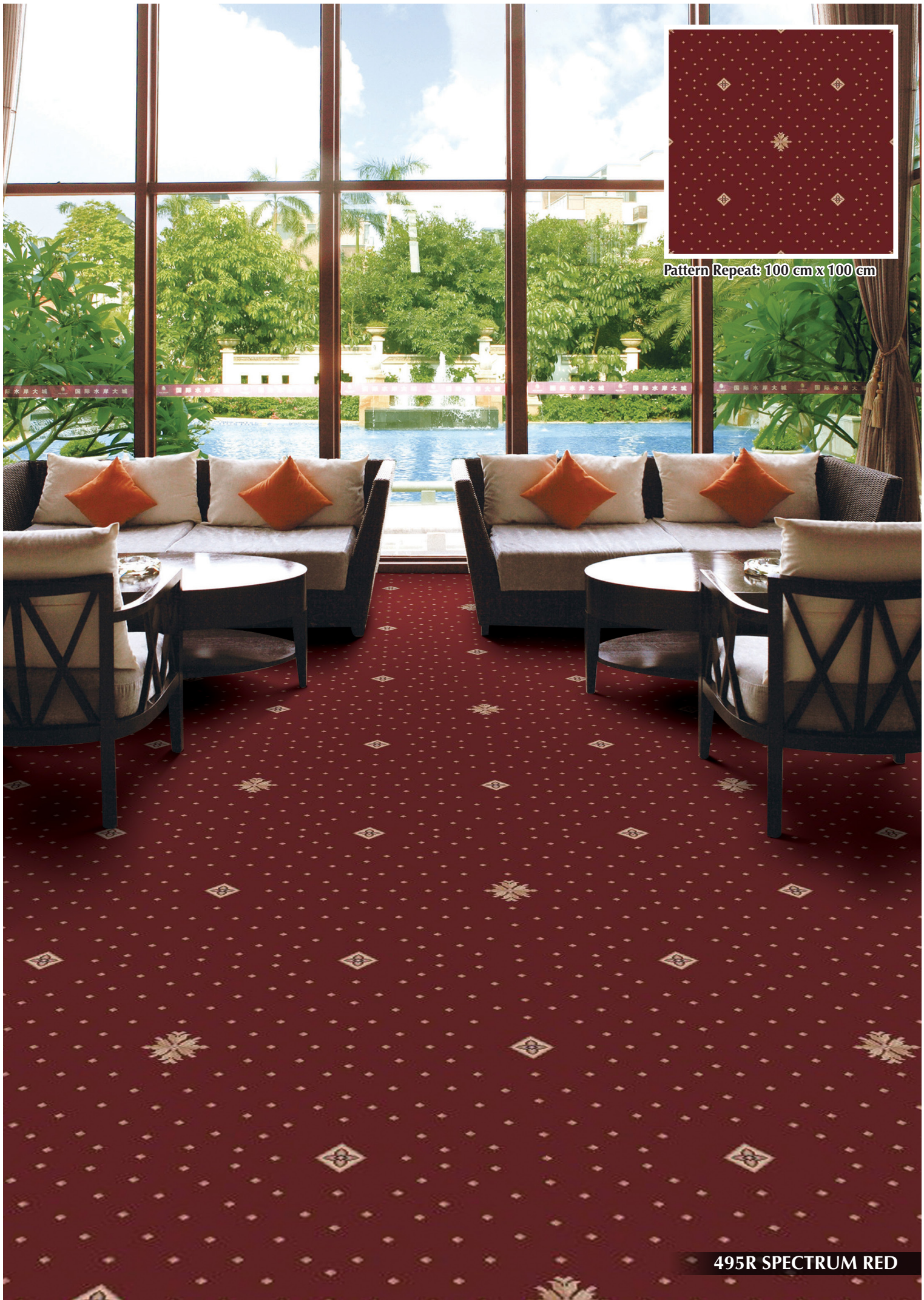
493R TOREADOR RED



Pattern Repeat: 133 cm x 166 cm

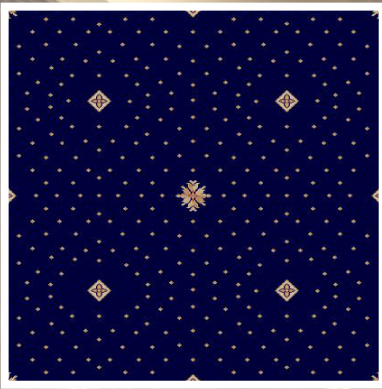


494B IMPRESSION BEIGE



Pattern Repeat: 100 cm x 100 cm

495R SPECTRUM RED



Pattern Repeat: 100 cm x 100 cm



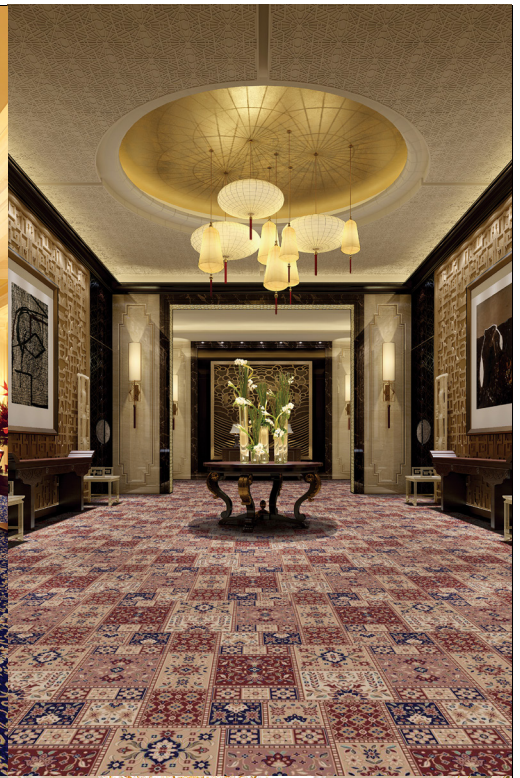
495N SPECTRUM BLUE



Pattern Repeat: 80 cm x 75 cm



496R DIVINE RED



CLASSIQUE WILTON Specifications

Construction	Wilton Weave
Yarn Composition	100% Fine Heatset Polypropylene
Yarn Dtex	1600
Tufted Pile Weight	Ca. 2100 g/m ² (62 oz/yd ²) (+/- 10%)
Total Weight	Ca. 2900 g/m ² (85.5 oz/yd ²) (+/- 10%)
Pile Height	Ca. 11.5 mm (+/- 0.5 mm)
Total Height	Ca. 13.5 mm (+/- 0.5 mm)
Density	756,000 points/m ²
Standard Roll Size	4m (+/-2%) x 25m (+/-2%)

Warranties

10 Year Carpet Wear Warranty
 Lifetime Antishock Carpet Warranty
 Ideal for Medium Hospitality Use.

The subfloor should be dry, smooth, flat, dust-free and resistant to compression and load-bearing. Where seaming is necessary, a seam sealant must be used for all such installations. Due to dye lot variations, actual color may vary slightly from the samples. Chair pads are recommended to prevent premature wear of carpet.

Performance

Stain Resistance
 Static Control
 Tuft Bind
 Dimensional Stability
 Flammability
 - Pill Test
 - Smoke Density
 Colourfastness
 - to light
 - to wet crocking
 - to dry crocking
 - to ozone

(as tested by ITTS Inc. USA)

10 (AATCC-175-2003)
 Pass - Max. 4 kV (AATCC 134-1996)
 Pass - 2.6 lbs (ASTM-D-1335)
 Pass - Max. 0.1% change (AACHEN)
 Pass - 8 (ASTM-D-2859-06)
 Pass - Max. 450 (ASTM-E-662-06)
 Good - 3 (AATCC-16E)
 Good - 4 (AATCC-16S)
 Good - 3.5 (AATCC-165)
 Excellent - 5 (AATCC-129)



Cut



Broadloom

MADE IN TURKEY