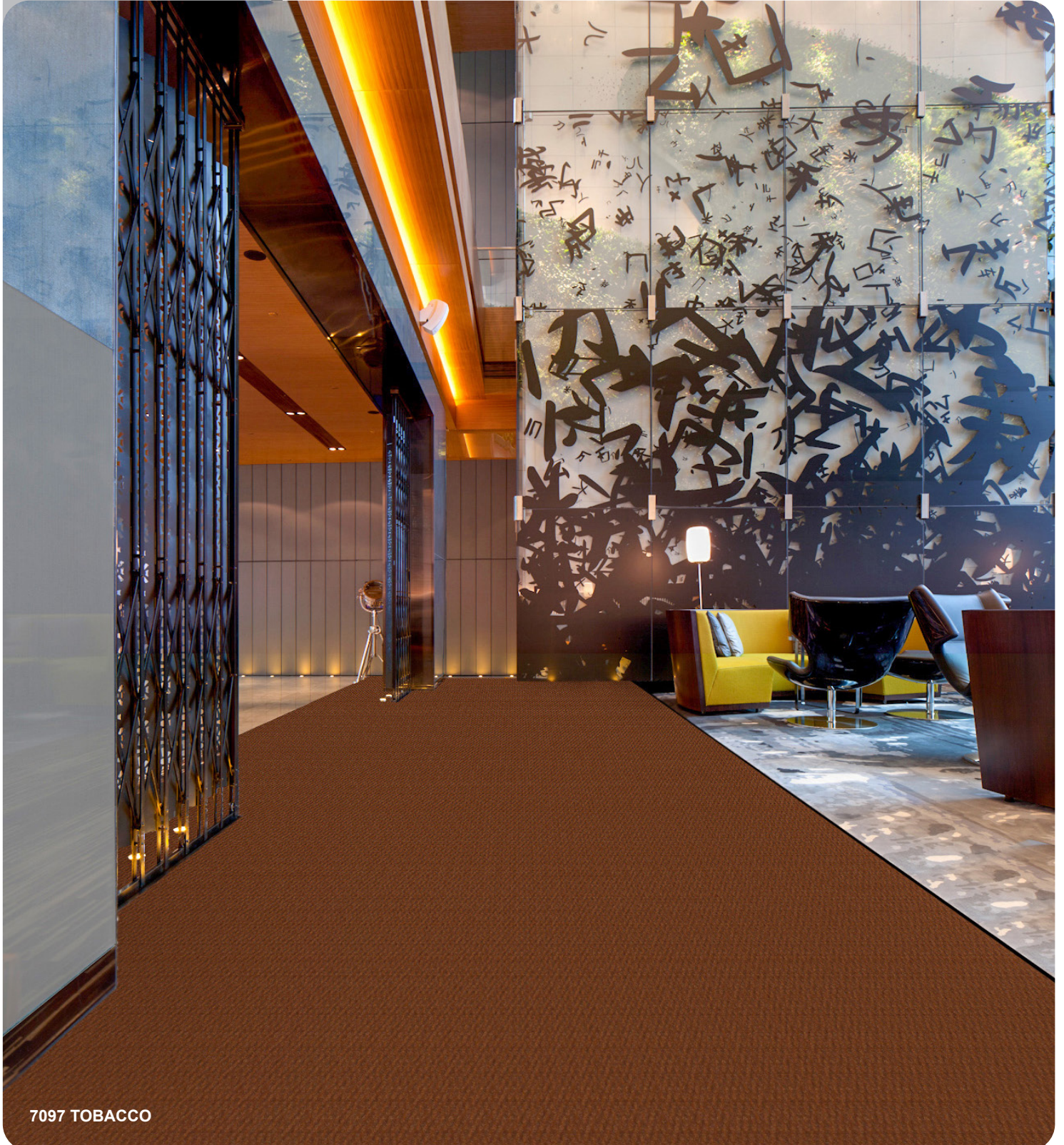




DIAMOND

ENTRANCE MATTING SYSTEM



7097 TOBACCO

RUNNERS & ENTRANCE MATS

Please note: There may be slight color difference between the picture and actual carpet.

“The First Line of Defense Matting System outside and inside the entrance.”

Designed to remove, trap, hides dirt and absorb moisture before they get indoor, helping to keep floors clean throughout your building. Trapping dirt and moisture at the door is a healthy component of indoor air quality and green building maintenance.

Gelfoam Anti-slip Backing.

Easy to Maintain.



3353 RED



1153 SPICE



2098 ANTHRACITE



3353 RED



7097 TOBACCO

DIAMOND Specifications

Construction	Needle-Felt Patterned
Yarn Composition	100% Polypropylene
Pile Weight	Ca. 1500 g/m ² (+/- 10%)
Total Weight	Ca. 2185 g/m ² (+/- 10%)
Pile Height	Ca. 4.5 mm (+/- 10%)
Total Height	Ca. 10 mm (+/- 10%)
Backing	Gelfoam Anti-Slip Backing
Standard Roll Size	2 m x 25 m

Performance

(as tested by ITTS Inc. USA)

Static Control	Pass - Max. 4 kV (ISO6356)
Acoustical Impact	24 db (EN ISO 140-8)
Dimensional Stability	Pass - Max. 0.1% change (ISO2551)
Grading	Heavy Commercial Spike Resistant
Flammability	Efl-Fully Adhesive Low (EN 13501-1, BS4790)
Classification	33-LC2 (EN13297)
Colourfastness to rubbing	4 (ISO105X12, except for 3353 3)

Suitability

For Hotel, Offices, Restaurant Entrance, Exhibitions, Fairs, Shows, Stage Floors, Walkway Areas, VIP Strips, Corridors, etc.

Warranty

5 Year Carpet Wear Warranty
Lifetime Anti-shock Carpet Warranty
Ideal for Normal Indoor Use.

The subfloor should be dry, smooth, flat, dust-free and resistant to compression and load-bearing. Where seaming is necessary, a seam sealant must be used for all such installations. Due to dye lot variations, actual color may vary slightly from the samples. Chair pads are recommended to prevent premature wear of carpet.



Manufactured in Belgium

DIAMOND
ENTRANCE MATTING SYSTEM