



# EXCEL PLUS



3166 FOREST GREEN



3128 DEEP RED



3146 CHESTNUT



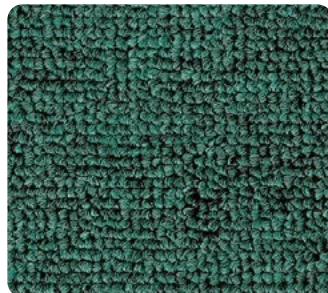
3155 BLUE LAPIS



3156 FIERY BLUE



3157 DEEP BLUE



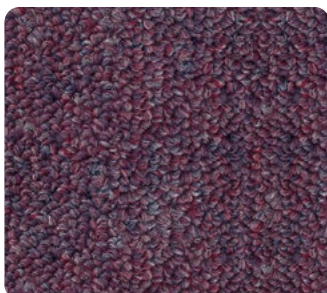
3166 FOREST GREEN



3177 MODERN GREY



3178 BLACK GRANITE



3186 SPICE WINE



3196 SWEET BEIGE



3196 SWEET BEIGE

## EXCEL PLUS Specifications

Construction	1/10" Gauge Tufted Loop Pile
Yarn Composition	100% Solution Dyed Polypropylene
Tufted Pile Weight	Ca. 400 g/m <sup>2</sup> (+/- 10%)
Total Weight	Ca. 1,330 g/m <sup>2</sup> (+/- 10%)
Pile Height	Ca. 3 mm (+/- 0.5 mm)
Total Thickness	Ca. 5.5 mm (+/- 0.5 mm)
Stitch Rate	39 per 10 cm
Secondary Backing	ActionBac®
Density (APYD)	3,595 ozs/yd <sup>2</sup>
Tuft Density	153,660 stitches/m <sup>2</sup>
Standard Roll Size	3.66 m (+/-2%) x 40m (+/-2%)

## Performance

(as tested by ITTS Inc. USA)

Stain Resistance	10 (AATCC-175-2003)
Static Control	Pass - Max. 4 kV (AATCC 134-1996)
Tuft Bind	Pass - 4.8 lbs (ASTM-D-1335)
Flammability	
- Radiant Panel	Pass - Class II (ASTM-E-648-06)
- Pill Test	Pass - 8 (ASTM-D-2859-96)
- Smoke Density	Pass - Max. 450 (ASTM-E-662-97)
Colourfastness	
- to light	Excellent - 5 (AATCC-16E)
- to wet & dry crocking	Excellent - 5 (AATCC-165)
- to ozone	Excellent - 5 (AATCC-129)

## Warranties

- 10 Year Carpet Wear Warranty
- 5 Year Commercial Wear Warranty
- Lifetime Antishock Carpet Warranty

Ideal for Residential and Light Commercial Use.

### Product Advisory Note:

Ensure the subfloor is clean, dry, smooth, level, dust-free, and capable of supporting loads without compression. Apply seam sealant where required during installation. Due to dye lot variations, actual colours may differ slightly from samples. Chair pads are recommended to reduce carpet wear.

Manufactured in U.A.E

# EXCELPLUS