



Cut & Loop



Broadloom

VIEW ON WEBSITE



SCAN HERE ↑

LABELLE V.23

BROADLOOM

100% SOLUTION DYED NYLON CARPET



2612 SILOSO | Pattern Repeat : 36.6 cm x 96 cm

ELEGANCE & CRAFTSMANSHIP

Ideal for Medium Commercial & Heavy Hospitality Use in Hotel Suites, Hotel Corridors, Conference Rooms, Offices, Auditoriums, Schools, Restaurants, Retail Establishments, Etc.



2609 SHANGRI-LA

Pattern Repeat : 36.6 cm x 96 cm



2602 PARK ROYAL



2605 REGENT



2609 SHANGRI-LA



2610 SHERATON



2611 CHANCELLOR



2612 SILOSO





2602 PARK ROYAL



2702 PACIFIC

Pattern Repeat : 36.6 cm x 100 cm



2702 PACIFIC



2704 EXCELSIOR



2707 MILLENIA



2707 MILLENIA



3613 PULLMAN

Pattern Repeat : 45.7 cm x 69.5 cm



3606 RAFFLES



3607 NOVOTEL



3609 FURAMA



3610 ESPLANADE



3612 DORSETT



3613 PULLMAN



3607 NOVOTEL



5136 WESTIN



5135 FULLERTON

Pattern Repeat : 36.5 cm x 42 cm



5132 STAMFORD



5134 SOFITEL



****5135 FULLERTON**



5136 WESTIN



6908 MERCURE

Pattern Repeat : 36.5 cm x 43.5 cm



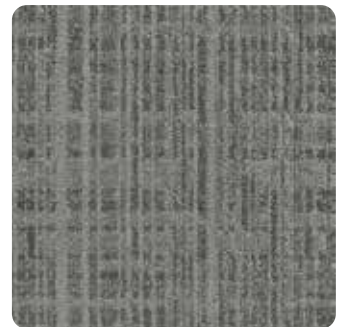
6901 BELMONT



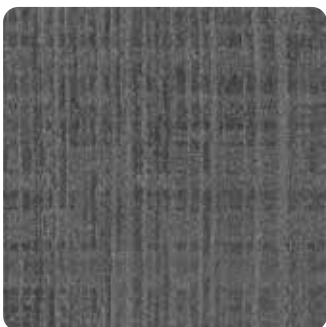
6902 MANDARIN



6904 CARLTON



6905 REGIS



6906 PENINSULA



6907 RENDEZVOUS



6908 MERCURE



6902 MANDARIN



7008 MARINA



Pattern Repeat : 36.5 cm x 59.3 cm



7001 CONCORDE



7002 BROADWAY



7003 FORTUNA



7005 MARRIOT



7006 INTERCON



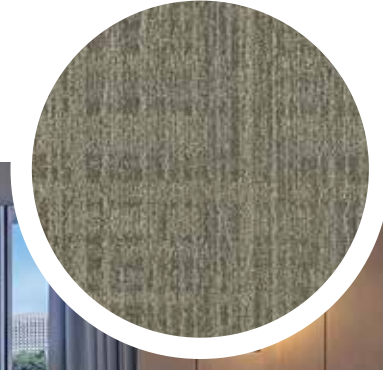
7007 QUINCY



7008 MARINA

HOTEL CONVENTION ROOM | SINGAPORE

▶ 6904 CARLTON

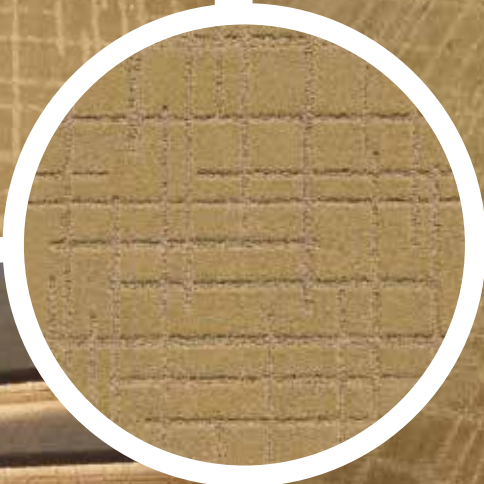
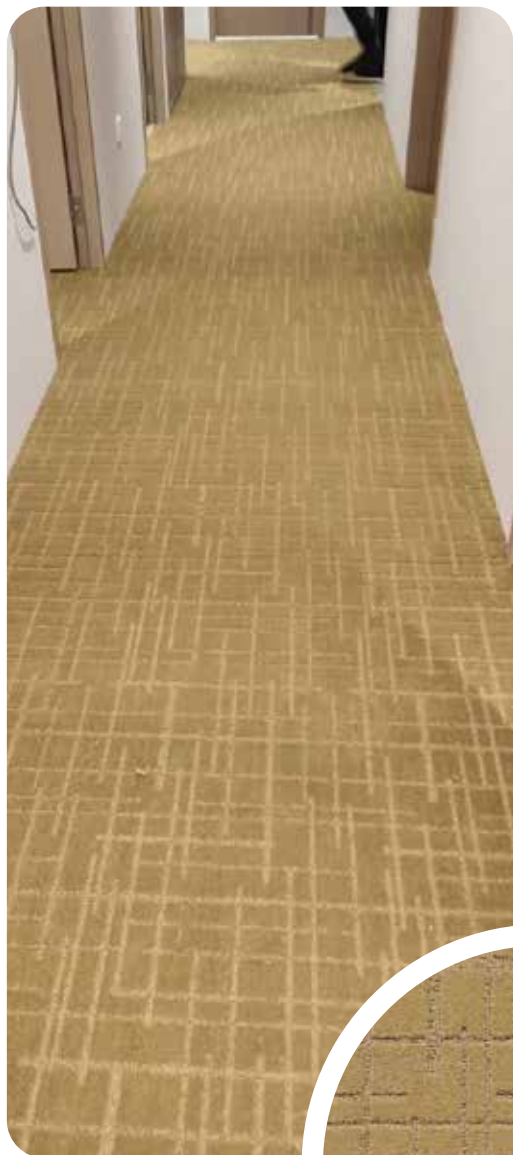




RESTAURANT | SINGAPORE

▶ 2602 PARK ROYAL

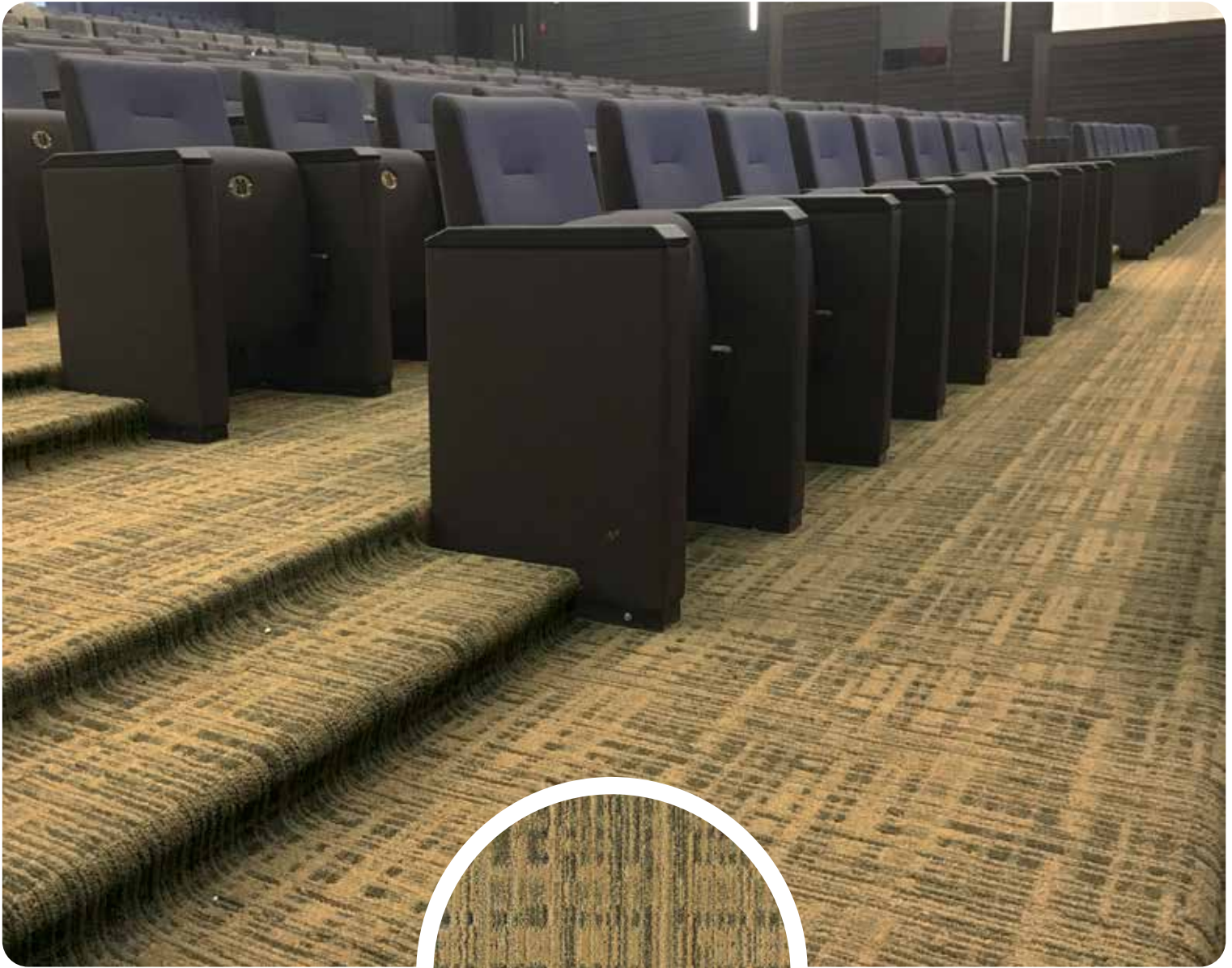




HOTEL CORRIDOR | SINGAPORE

▶ 2707 MILLENIA







6906 PENINSULA | Pattern Repeat : 36.5 cm X 43.5 cm



5134 SOFITEL | Pattern Repeat : 36.5 cm X 42 cm

LABELLE Specifications

Construction	1/10" Tufted Cut & Loop Pattern
Yarn Composition	100% Solution Dyed Nylon, 2-Ply Heatset (with 35% recycled content)
Tufted Pile Weight	Ca. 1085 g/m ² (32 oz/yd ²) (+/- 10%)
Total Weight	Ca. 1870 g/m ² (55.14 oz/yd ²) (+/- 10%)
Pile Height	Ca. 6.5 mm (+/- 0.5 mm)
Total Height	Ca. 8.5 mm (+/- 0.5 mm)
Density (APYD)	4500 ozs/yd ²
Tuft Density	119,888 stitches/m ²
Stitch Rate	47.2 per 10cm
Primary Backing	PP Woven Cloth (7% recycled content)
Secondary Backing	ActionBac®
Standard Roll Size	3.66m (+/-2%) x 30m (+/-2%)

Performance

(as tested by ITTS Inc. USA)

Static Control	Pass - Max. 4 kV (AATCC-134-1996)
Tuft Bind	Pass - 5.4 lbs (ASTM-D-1335)
Dimensional Stability	Pass - Max. 0.2% change (AACHEN)
Indoor Air Quality	CRI Green Label Plus
Flammability	
- Pill Test	Pass - 8 (ASTM-D-2859-06)
- Radiant Panel	Pass - Class II (ASTM-E-648-10)
- Smoke Density	Pass - Max. 450 (ASTM-E-662-06)
Colourfastness	
- to light	Excellent - 5 (AATCC-16E)
- to wet & dry crocking	Excellent - 5 (AATCC-165)
- to ozone	Excellent - 5 (AATCC-129)
Total Recycled Content	20% (By Weight)

Warranties

- 10 Year Commercial And Hospitality Carpet Wear Warranty
- Lifetime Antishock Carpet Warranty

The subfloor should be dry, smooth, flat, dust-free and resistant to compression and load-bearing. Where seaming is necessary, a seam sealant must be used for all such installations. Due to dye lot variations, actual color may vary slightly from the samples. Chair pads are recommended to prevent premature wear of carpet.



Cut & Loop



Broadloom