



Cut & Loop

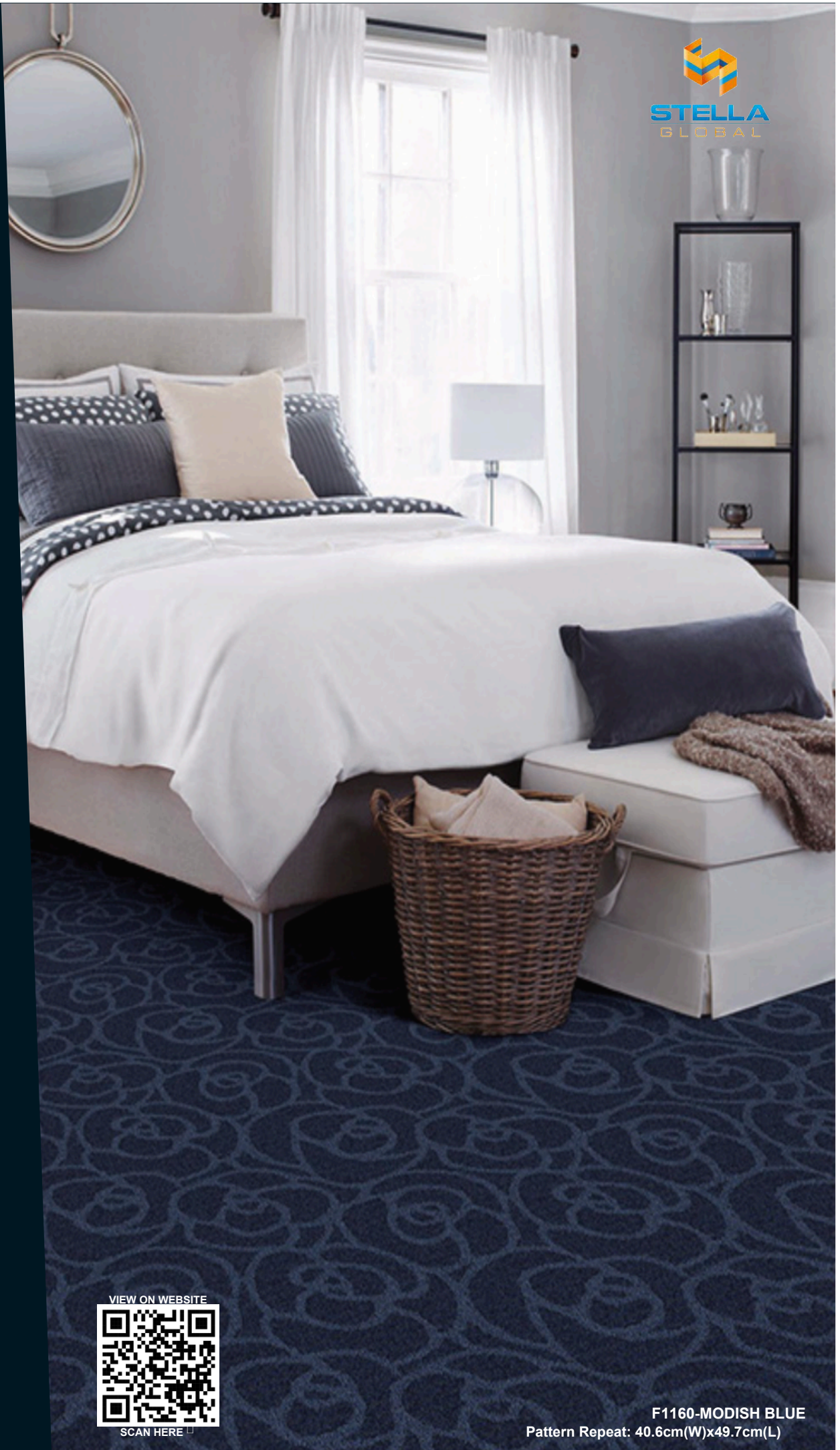


Broadloom



STELLA
GLOBAL

LEONARA



VIEW ON WEBSITE



SCAN HERE

F1160-MODISH BLUE
Pattern Repeat: 40.6cm(W)x49.7cm(L)





F018-HALLMARK BEIGE
Pattern Repeat: 40.6 cm (W) x 49.7 cm (L)





F333-DIVINE RED
Pattern Repeat: 40.6 cm (W) x 49.7 cm (L)



F081-LOVELY BROWN
Pattern Repeat: 40.6 cm (W) x 49.7 cm (L)



F089-STYLISH GREY
Pattern Repeat: 40.6 cm (W) x 49.7 cm (L)



F018-HALLMARK BEIGE
 Pattern Repeat: 40.6 cm (W) x 49.7 cm (L)



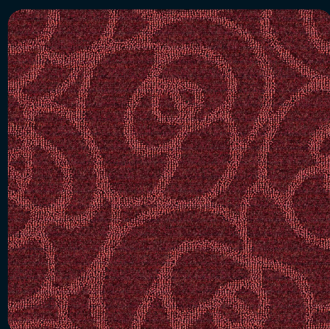
F018 - HALLMARK BEIGE



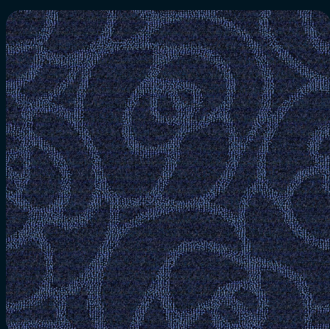
F081 - LOVELY BROWN



F089 - STYLISH GREY



F333 - DIVINE RED



F1160 - MODISH BLUE

LEONARA Specifications

Construction	1/8" Tufted Level Cut & Loop Pattern
Yarn Composition	100% Solution Dyed Polypropylene
Tufted Pile Weight	Ca. 815 g/m ² (24 oz/yd ²) (+/- 10%)
Total Weight	Ca. 1820 g/m ² (53.67 oz/yd ²) (+/- 10%)
Pile Height	Ca. 6 mm
Total Height	Ca. 8 mm
Secondary Backing	ActionBac®
Standard Roll Size	3.66m (+/-2%) x 30m (+/-2%)
Pattern Repeat	40.6 cm (W) x 49.7 cm (L)

Performance

Tuft Bind	19N
Flammability	Pass
Colourfastness	
- to light	Excellent - 6
- to wet & dry crocking	Excellent - 4-5

Warranties

5 Year Carpet Wear Warranty
 Lifetime Antishock Carpet Warranty
 Ideal for Residential and Hospitality Use.

The subfloor should be dry, smooth, flat, dust-free and resistant to compression and load-bearing. Where seaming is necessary, a seam sealant must be used for all such installations. Due to dye lot variations, actual color may vary slightly from the samples. Chair pads are recommended to prevent premature wear of carpet.

