



VIEW ON WEBSITE



SCAN HERE ↑

ROYAL AXMINSTER



102 GRAPHITE GREY

CUT PILE PATTERNED

Please note: There may be slight color difference between the picture and actual carpet. Slight color variation may occur from dye lot to dye lot.



328 EMERALD GREEN



549 GARNET RED



102-GRAPHITE GREY



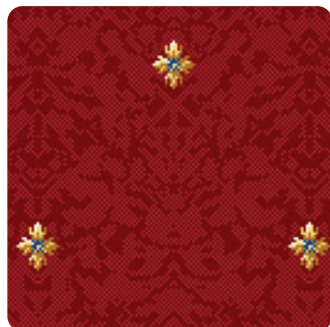
212-HARMONIC BEIGE



328-EMERALD GREEN



431-PERSIAN BLUE



549-GARNET RED

ROYAL AXMINSTER Specifications

Construction	Cutpile Axminster
Yarn Composition	80% NZ & UK Wool, 20% Nylon 6.6
Pitch per inch	7
Rows per inch	8
Tufted Pile Weight	Ca. 1152 g/m ² (34 oz/yd ²) (+/- 10%)
Total Weight	Ca. 1850 g/m ² (54.5 oz/yd ²) (+/- 10%)
Pile Height	Ca. 7 mm (+/- 0.3 mm)
Total Height	Ca. 9 mm (+/- 0.3 mm)
Yarn Count	R660 Tex / 2ply
Warp	Cotton & Polyester
Weft	PP Backing
Latex	Fray Resistant Latex Compound
Standard Roll Size	4m (+/-2%) x 25m (+/-2%)
Pattern Repeat Size	40 cm x 51.4 cm

Performance

(as tested by BTTC, UK)

Static Control	BS EN 1815:METHOD A:1998
Fibre Integrity	WENZ TM 283:1997
Carpet Classification	BS EN 1307
Abrasion Resistance	PD 6527:Method 17:1990
Dimensional Stability	BS ISO 17984:2014
Oil Content	BS 8459:2005 (2016)
Hexapod	BS ISO 10361:Method B:2012
Flammability	
- Radiant Panel	BS EN ISO 13501-1:2007+A1:2009
- Pill Test	BS 6307:1982(2003)/ISO 6925-1982(2003)
- Hot Metal Nut	BS 4790:1987 (2014)
- Smoke Density	ASTM E662-14
ColorFastness	
- to light	BS EN ISO105-B02:2003
- to water	BS EN ISO105-E01:2003
- to sea water	BS EN ISO105-E02:2013
- to wet & dry crocking	BS EN ISO105-X12:2002
- to Shampoo	BS ISO 18168:2005
Thickness Loss Under Static Loading	BS 4939:1987 (2007)
Thickness Loss Under Dynamic Loading	BS ISO 2094:1999 (2005)
Tuft Withdrawal Force	BS 5229:1975
Non-Hazardous: AZO Dyes	EN 14362-1

Warranties

10 Year Carpet Wear Warranty
Lifetime Antishock Carpet Warranty
Ideal for Medium Contract Use.

The subfloor should be dry, smooth, flat, dust-free and resistant to compression and load-bearing. Where seaming is necessary, a seam sealant must be used for all such installations. Due to dye lot variations, actual color may vary slightly from the samples. Chair pads are recommended to prevent premature wear of carpet.

Suitability

For Public Areas, Corridors, Guest Room, Restaurant, Casino, VIP Lounge, Staircase etc. Inherently Colorfast and Stain Resistant.

