

Cut & Loop Broadloom

VISIT WEBSITE



STELLA GLOBAL

ELEGANT PATTERNS, TIMELESS LUXURY

Made in Dubai, U.A.E.

TM

ROYAL VILLA

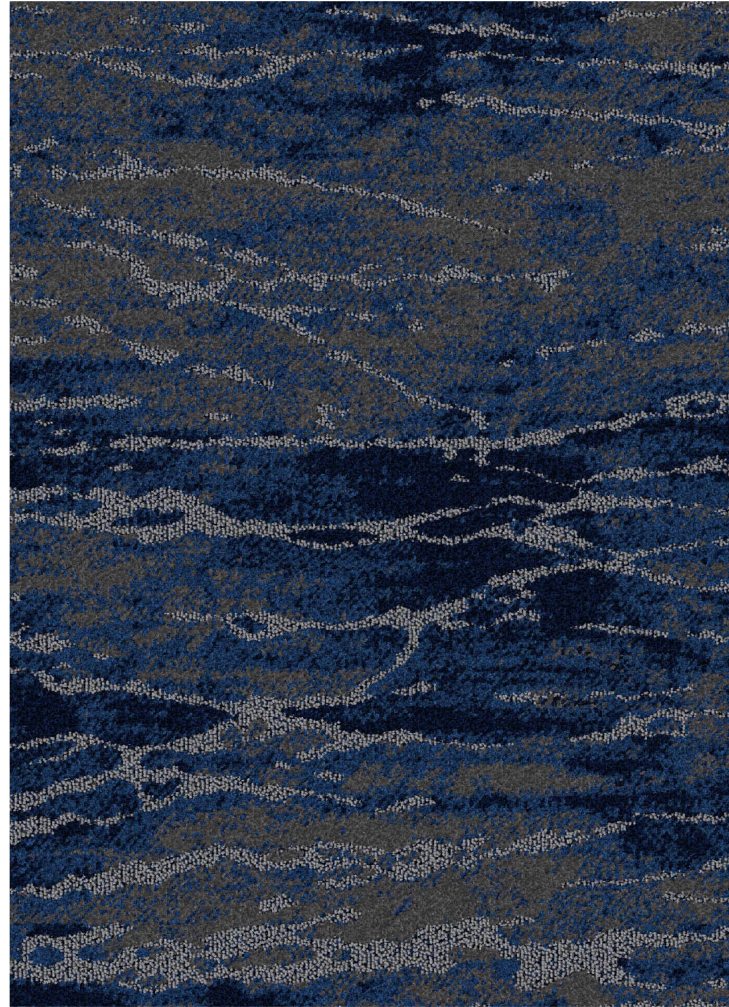
BROADLOOM

100% SOLUTION DYED POLYESTER



1255 ENCHANTED GREY

Pattern Repeat: 198 cm x 72 cm



1288

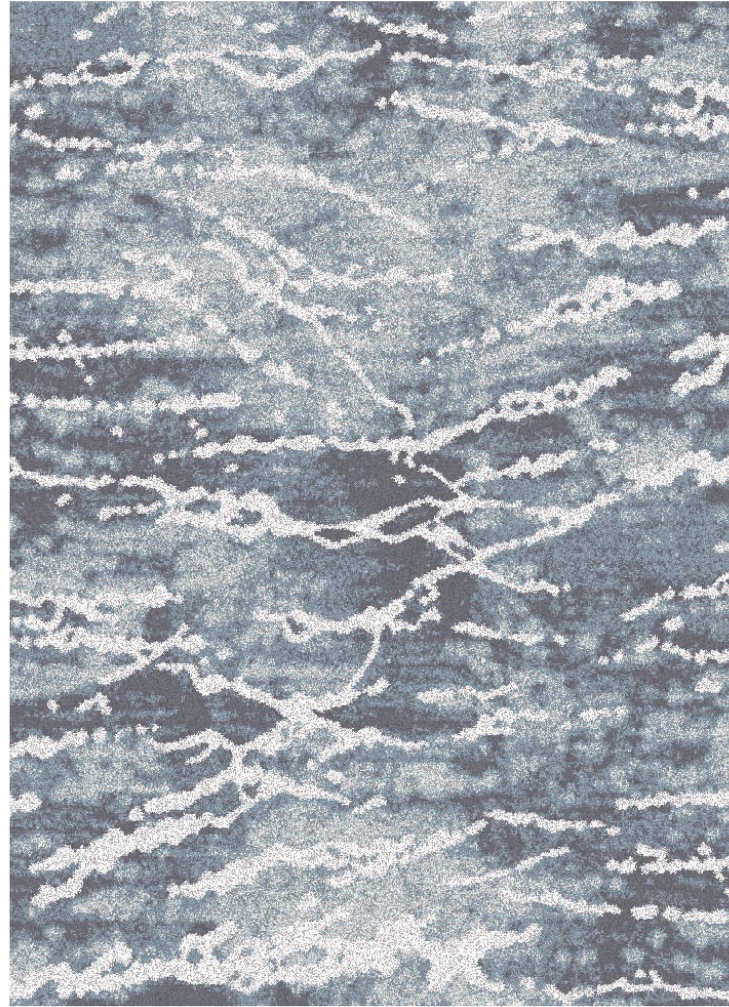
CELESTIAL BLUE

“

Improved Sound And Heat Insulation, Fire-Resistant Shielding, & Long-Term Defense Against Moisture, Mold, And Mildew.



Pattern Repeat: 198 cm x 72 cm



1277

CELESTIAL GREY



“

Vibrant, Fade-Resistant Beauty — Superior Colorfastness to Light, Water, and Rubbing for Lasting Elegance in Every Space.



Pattern Repeat: 198 cm x 72 cm



1255

ENCHANTED GREY



“

Action Fleece backing provides superior durability and insulation, safeguarding your home from impact noise.

Pattern Repeat: 198 cm x 72 cm



1233

ENCHANTED CREAM



“

"Walk of Fame" is a soil-resistant treatment that extends the longevity of your carpet.

ROYAL VILLA

SWATCHES

Pattern Repeat :198 cm (W) x 72 cm (L)

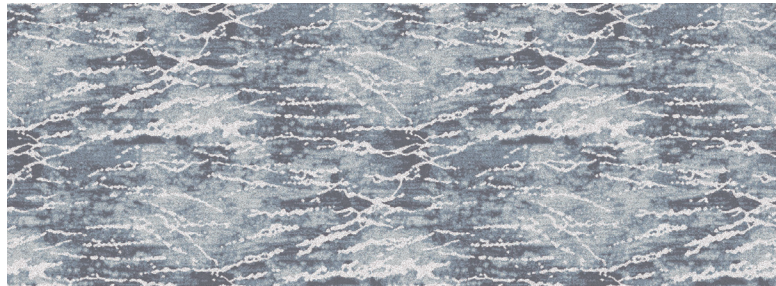
The delightful sheen on the pile surface of Royal Villa results in beautiful shading effects as shown in the accompanying pictures, which enhances the natural look and beauty of the carpet. This is not a defect but an inherent characteristic of this lovely carpet collection.



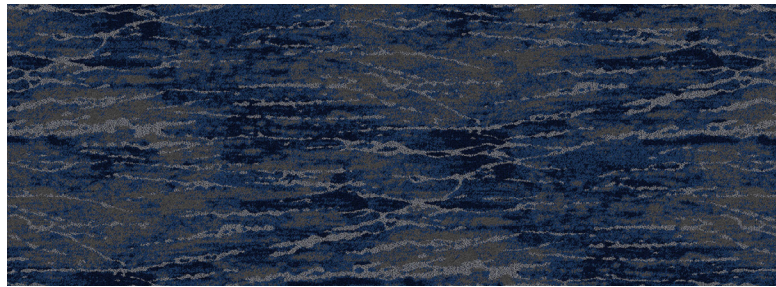
1233 ENCHANTED CREAM



1255 ENCHANTED GREY



1277 CELESTIAL GREY



1288 CELESTIAL BLUE

ROYAL VILLA Specifications

Construction	1/8" Color Point Tufted Multi Level Cut Loop
Yarn Composition	100% Solution Dyed Polyester
Tufted Pile Weight	ca. 1650 g/m ² (48.66 oz/yd ²) (+/- 10%)
Total Weight	ca. 2600 g/m ² (76.7 oz/yd ²) (+/- 10%)
Pile Height	ca. 7 mm (+/- 0.5 mm)
Total Thickness	ca. 10 mm (+/- 0.5 mm)
Density (APYD)	5561.63 oz/yd ³
Tuft Density	170,100 stitches/m ² (+/- 5%)
Stitch Rate	54 per 10 cm
Primary Backing	Woven
Secondary Backing	Action Fleece Backing
Standard Roll Size	4 m (+/- 2%) x 30 m (+/- 2%)
Pile Treatment	Walk Of Fame
Pattern Repeat	198 cm (W) x 72 cm (L)

Performance

VOC Emission	≤ 0.5 mg/m ² /hour (CRI GLP) (ASTM D5116-17)
Flammability	Pass - 8 (ASTM D-2859 / FF1-70 / 16CFR1630)
Colorfastness To Rubbing	≥ 4 - 5 (EN ISO 105-X12)
Colorfastness To light	≥ 4 - 5 (ISO 105 B02:2014)
Colorfastness To Water	≥ 4 - 5 (ISO 105 E01:2013)
Formaldehyde Content	Not Detected (ISO 14184-1:2011)

Warranties

- 10 Year Residential Carpet Wear Warranty
- Lifetime Antishock Carpet Warranty

Product Advisory Note:

Ensure the subfloor is clean, dry, smooth, level, dust-free, and capable of supporting loads without compression. Apply seam sealant where required during installation. Due to dye lot variations, actual colours may differ slightly from samples. Chair pads are recommended to reduce carpet wear.

Ideal for Residential & Moderate Hospitality Use in Bedrooms, Living Rooms, Dining Rooms, Study Rooms, Entrances, Hallways, Hotel Guest Rooms, Hotel Suites, Etc.



Made in Dubai, U.A.E.

Disclaimer: The specifications and certifications stated are valid at the time of printing and may be subject to change. For the latest information, please contact our sales team or visit our website.

