



Cut

Broadloom

VISIT WEBSITE



Made in Dubai, U.A.E.

# ROYAL SENSATION™ BROADLOOM

100% SOLUTION DYED POLYESTER



STELLA  
GLOBAL

*Feel  
The Sensation  
Love  
The Comfort*



5475 FOREST GRAIN



# 5175

## PATH STEEL

(Pattern Repeat: 33x24cm)



# 5275

## MAZE GRAIN

(Pattern Repeat: 33x25cm)



**Superior Sound  
& Heat Insulation  
with Added Fire  
Resistance**



# 5277

## MAZE COAL

(Pattern Repeat: 33x25cm)



**Durable Protection  
Against Moisture,  
Mould & Mildew**





# 5296

## MAZE SAND

(Pattern Repeat: 32x25cm)



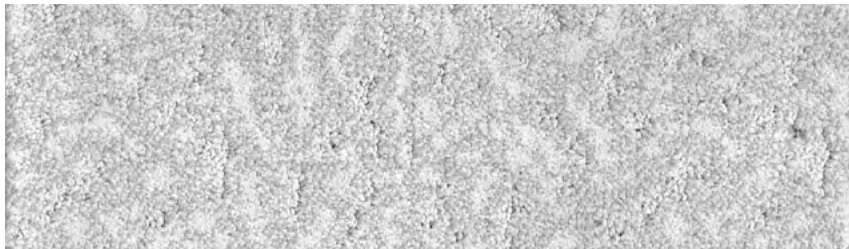
*Slight colour variation may occur from dye lot to dye lot. Kindly check stock availability with us before confirming the order.*



# 5371

## CHILLON SILVER

(Pattern Repeat: 33x28cm)



# 5375 CHILLON GREY

(Pattern Repeat: 33x28cm)



# 5390

## CHILLON

### BEIGE

(Pattern Repeat: 33x28cm)



Action Fleece  
Backing Offers  
Exceptional Durability  
& Insulation, Helping  
Protect Your Home  
from Impact Noise



# 5393

## CHILLON BROWN

(Pattern Repeat: 33x28cm)



*Slight colour variation may occur from dye lot to dye lot. Kindly check stock availability with us before confirming the order.*



# 5475

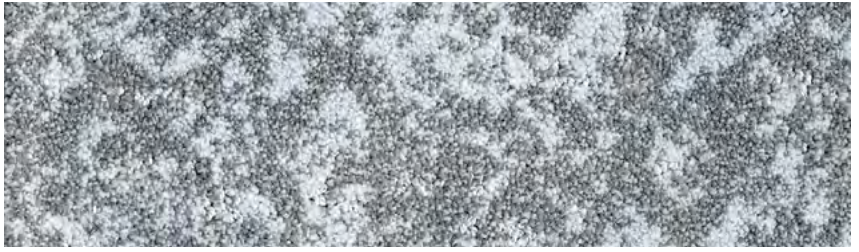
## FOREST GRAIN

(Pattern Repeat: 32x45cm)



# 5476 FOREST CHILL

(Pattern Repeat: 32x45cm)



# 5477

## FOREST COAL

(Pattern Repeat: 32x45cm)



**“Walk of Fame”  
Is a Soil-Resistant  
Treatment That  
Enhances the  
Longevity of Your  
Carpet**



# 5496 FOREST SAND

(Pattern Repeat: 32x45cm)



*Slight colour variation may occur from dye lot to dye lot. Kindly check stock availability with us before confirming the order.*

# ROYAL SENSATION

## SWATCHES



**5175 PATH STEEL**  
(Pattern Repeat: 33x24cm)



**5275 MAZE GRAIN**  
(Pattern Repeat: 33x25cm)



**5277 MAZE COAL**  
(Pattern Repeat: 33x25cm)



**5296 MAZE SAND**  
(Pattern Repeat: 32x25cm)



**5371 CHILLON SILVER**  
(Pattern Repeat: 33x28cm)



**5375 CHILLON GREY**  
(Pattern Repeat: 33x28cm)



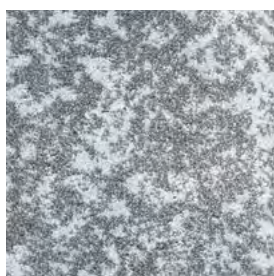
**5390 CHILLON BEIGE**  
(Pattern Repeat: 33x28cm)



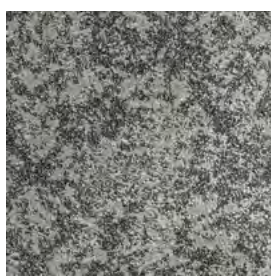
**5393 CHILLON BROWN**  
(Pattern Repeat: 33x28cm)



**5475 FOREST GRAIN**  
(Pattern Repeat: 32x45cm)



**5476 FOREST CHILL**  
(Pattern Repeat: 32x45cm)



**5477 FOREST COAL**  
(Pattern Repeat: 32x45cm)



**5496 FOREST SAND**  
(Pattern Repeat: 32x45cm)



## ROYAL SENSATION Specifications

Construction	1/8" Tufted Multi Level Cut Loop
Yarn Composition	100% Solution Dyed Polyester
Tufted Pile Weight	ca. 1661 g/m <sup>2</sup> (48.99 oz/yd <sup>2</sup> ) (+/- 10%)
Total Weight	ca. 2600 g/m <sup>2</sup> (76.68 oz/yd <sup>2</sup> ) (+/- 10%)
Pile Height	ca. 7 mm (+/- 0.5 mm)
Total Thickness	ca. 10 mm (+/- 0.5 mm)
Density (APYD)	6399 oz/yd <sup>3</sup>
Tuft Density	160,650 stitches/m <sup>2</sup> (+/- 5%)
Stitch Rate	51 per 10 cm
Primary Backing	Woven
Secondary Backing	New Fleece Backing
Standard Roll Size	3.66m (+/-2%) x 30m (+/-2%)
Pile Treatment	Walk Of Fame

## Performance

VOC Emission	< 0.5mg/m <sup>2</sup> /hour (CRI GLP) (ASTM D5116-17)
Flammability	Pass - 8 (ASTM D-2859 / FF1-70 / 16CFR1630)
Colorfastness To Rubbing	≥ 4 - 5 (EN ISO 105-X12)
Colorfastness To light	≥ 4 - 5 (ISO 105 B02:2014)
Colorfastness To Water	≥ 4 - 5 (ISO 105 E01:2013)
Formaldehyde Content	Not Detected

## Warranties


10 Year Residential Carpet Wear Warranty

Lifetime Antishock Carpet Warranty

Product Advisory Note:

Ensure the subfloor is clean, dry, smooth, level, dust-free, and capable of supporting loads without compression. Apply seam sealant where required during installation. Due to dye lot variations, actual colours may differ slightly from samples. Chair pads are recommended to reduce carpet wear.

Ideal for Bedrooms, Living Rooms, Dining Rooms, Entrances, Hallways, Study Rooms, Hotel Guest Rooms and for Moderate Hospitality Use.



### WALK OF FAME

Giving your carpets a boost of soil-resisting properties with Walk of Fame. An anti-soiling treatment that increases the lifespan of your carpet. Technology meets practicality with this dirt-repelling treatment.





 **Made In Dubai, U.A.E.**

Disclaimer: The specifications and certifications stated are valid at the time of printing and may be subject to change. For the latest information, please contact our sales team or visit our website.