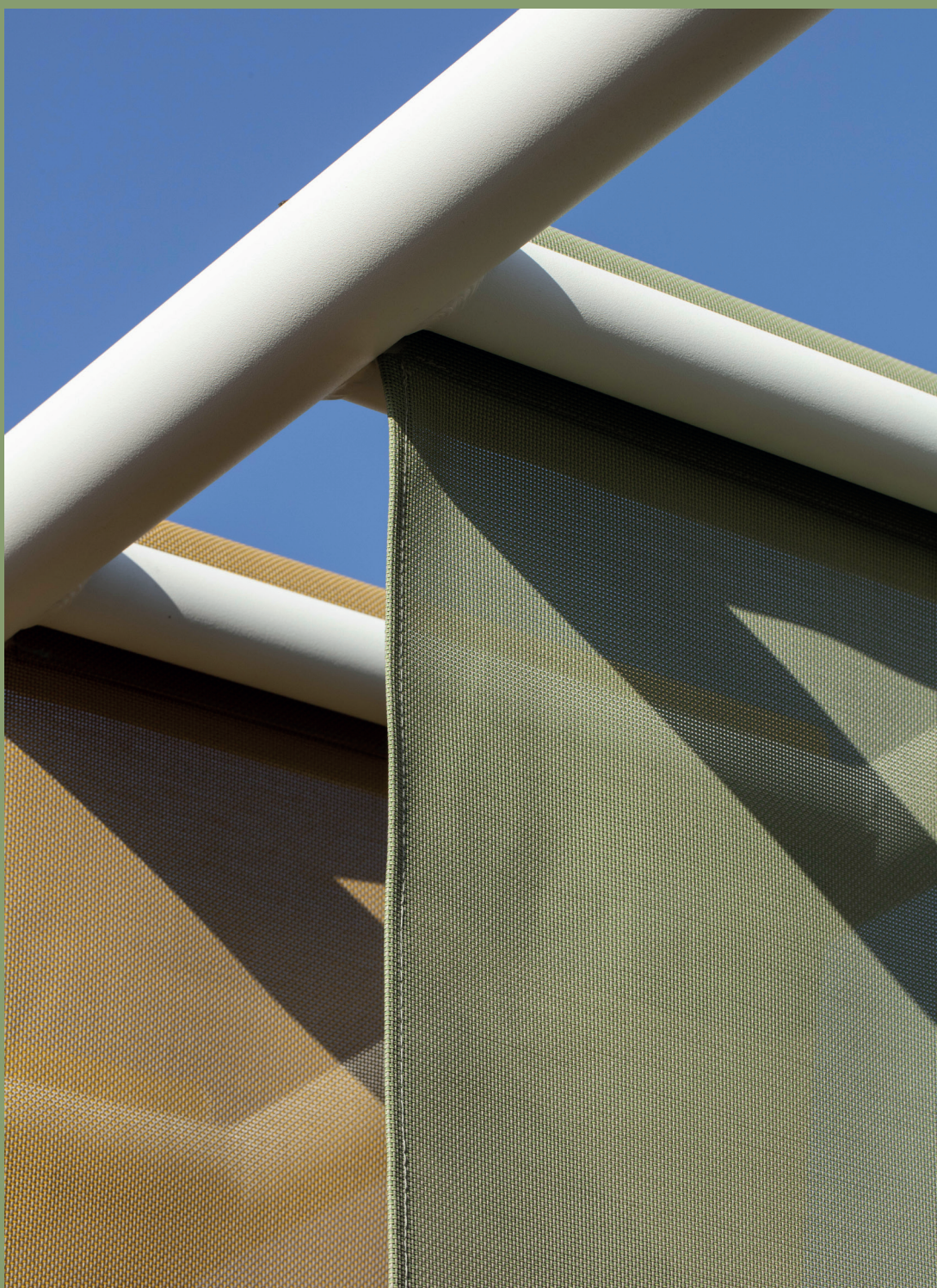


# Batyline

Perform

The high  
performance fabric

*Un tejido de alto  
rendimiento*



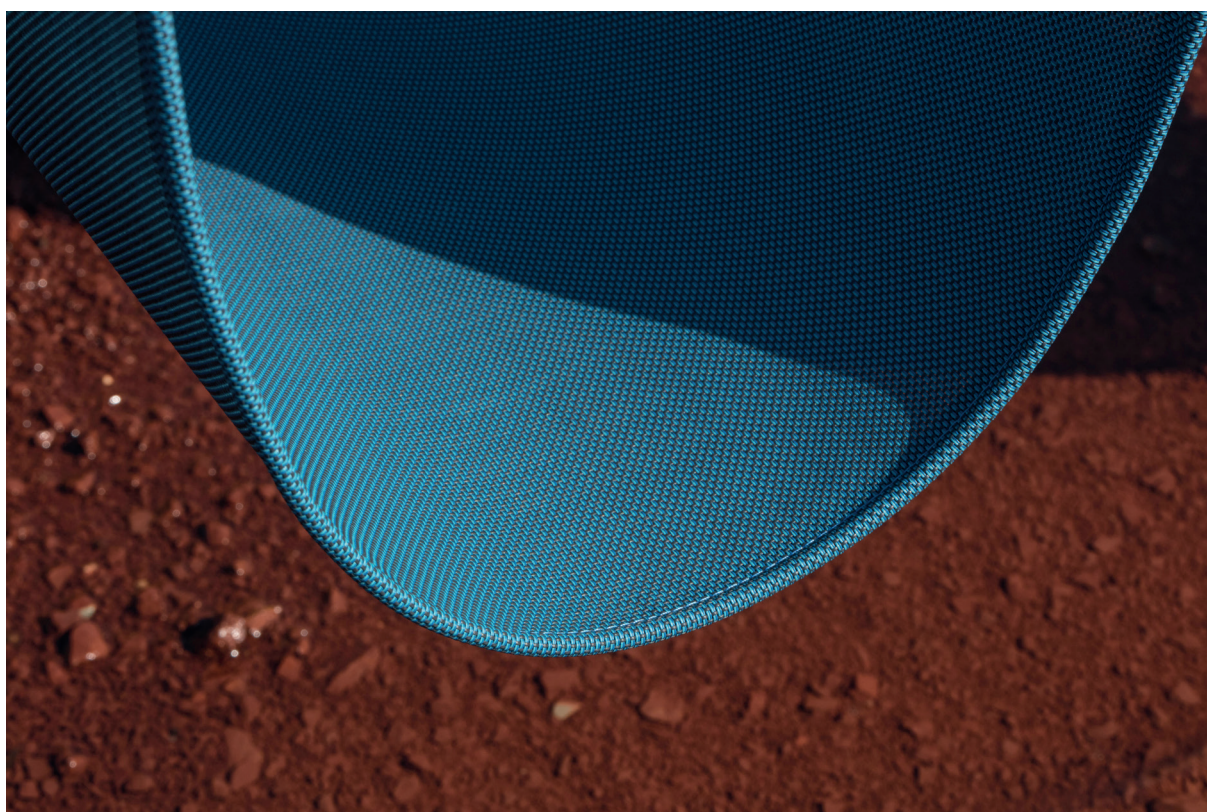
# Batyline | Perform



# Batyline | Perform

The Perform range features the brand's high-performance fabrics for outdoor furniture. These fabrics possess all the unique characteristics that have forged Batyline's reputation: strength performance, resistance to demanding climatic conditions (UV, moulds, bad weather) and excellent durability.

*La gama Perform presenta los tejidos de alto rendimiento de la marca para el mobiliario de exterior. Estos tejidos tienen todas las características únicas que han forjado la reputación de Batyline: alto rendimiento mecánico, resistencia a las condiciones climáticas más exigentes (UV, moho, condiciones climáticas extremas) y una excelente durabilidad.*



# Batyline | Perform



## Batyline Iso

**Smart:** a weave that ensures optimised placement and cutting in any direction in warp or weft

**Inteligente:** un tejido que garantiza una colocación y un corte optimizado en cualquier dirección tanto en urdimbre como en trama

**Classic:** a degree of transparency appreciated for lightweight, enduring design

**Clásico:** un grado de transparencia apreciado para un diseño ligero y atemporal

**Robust:** the high-performance Batyline fabric  
**Robusto:** el tejido Batyline de alto rendimiento



## Batyline Duo

**Elegant:** deep colours thanks to a multi-colored yarn weave

**Elegante:** con colores profundos gracias a un tejido de hilo multicolor

**Sophisticated:** random weave giving a natural aspect with the Twist version

**Sofisticado:** un hilo aleatorio que da un aspecto natural con la versión Twist

**Robust:** the high-performance Batyline fabric  
**Robusto:** el tejido Batyline de alto rendimiento



## Batyline Lounge

**Enduring:** the elegance of a simple, classic design

**Atemporal:** la elegancia de un diseño sencillo y clásico

**Practical:** very easy upkeep, specially created for covering furniture seats and backrests for the Contract market

**Práctico:** de muy fácil mantenimiento, especialmente creado para tapicería de asientos y respaldos para el mercado de mobiliario Contract

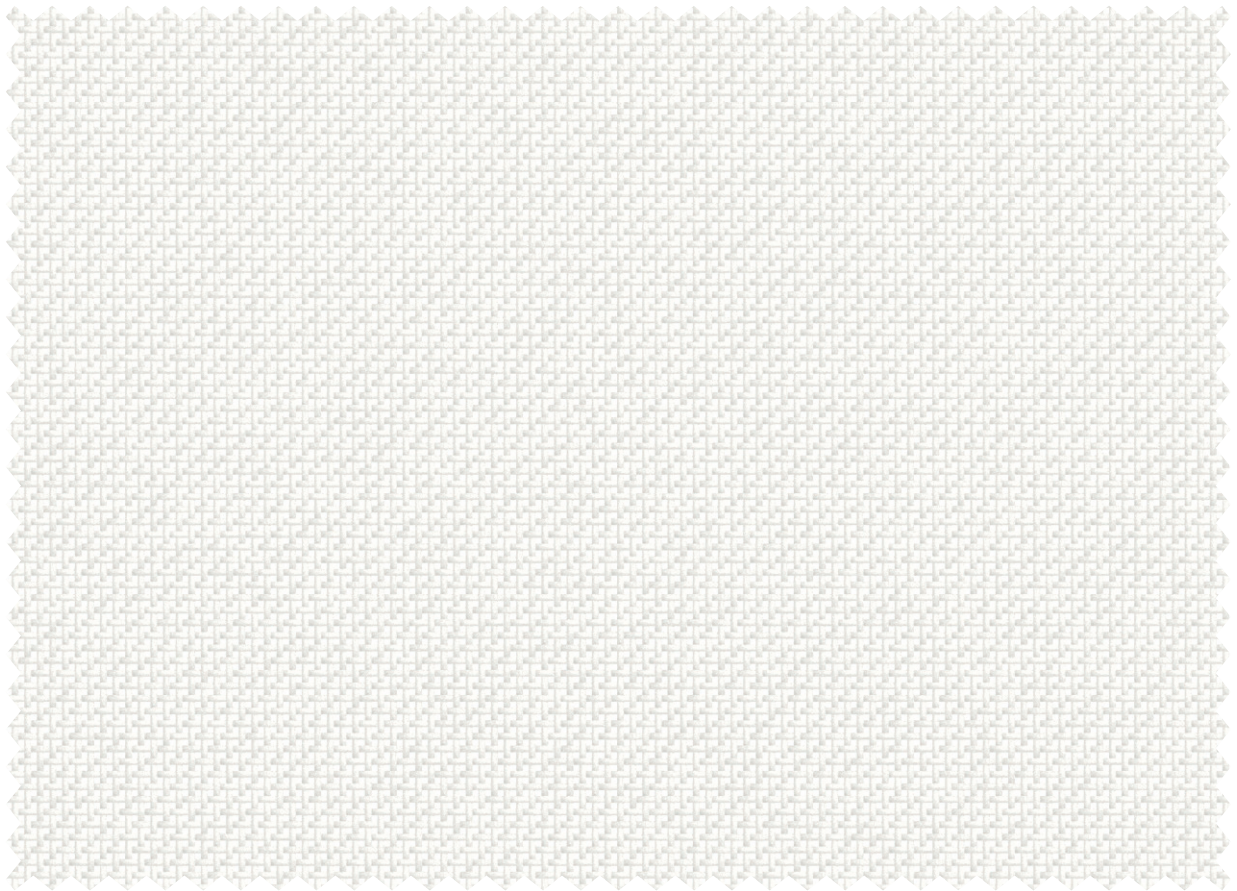
**Robust:** the high-performance Batyline fabric  
**Robusto:** el tejido Batyline de alto rendimiento

# Batyline Iso



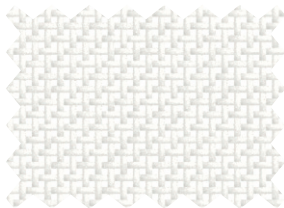
This fabric contains a **28% recycled material** including 100% recycled polyester core yarn.

Este tejido contiene un **28 % de material reciclado**, incluido un **hilo central de poliéster 100 % reciclado**.



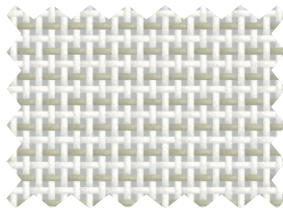
Snow  
*Nieve*

7407-5001



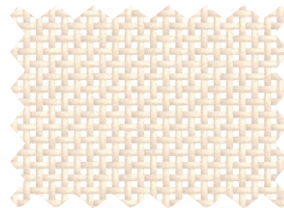
Snow  
*Nieve*

7407-5001



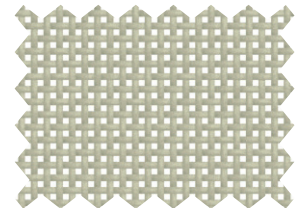
Raffia  
*Raffia*

7407-50883



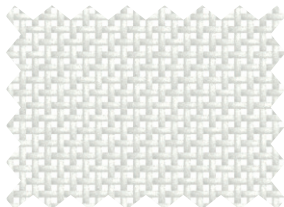
Sand  
*Arena*

7407-5029



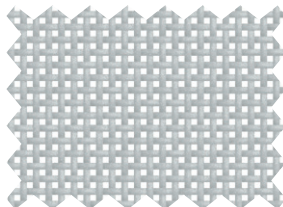
Almond  
*Almendra*

7407-50880



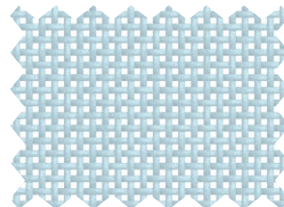
Chalk  
*Tiza*

7407-51054



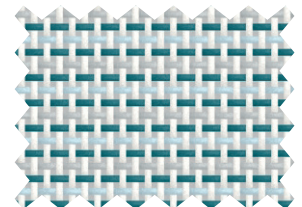
Platinum grey  
*Gris platino*

7407-5374



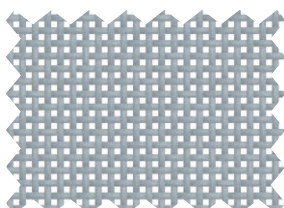
Cloud  
*Nube*

7407-50881



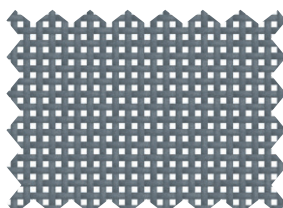
Mist  
*Niebla*

7407-50884



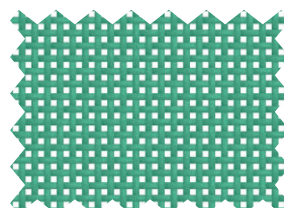
Steel  
*Acero*

7407-5003



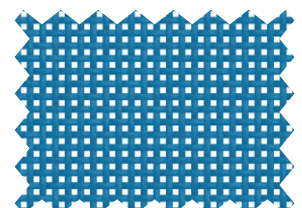
Slate  
*Pizarra*

7407-5004



Botanica  
*Botánica*

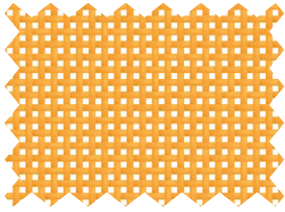
7407-51057\*



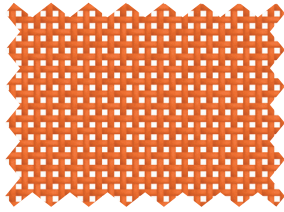
Electric bloom  
*Azul eléctrico*

7407-51056

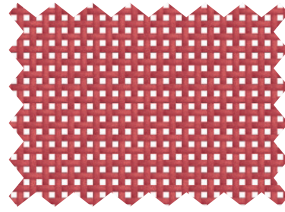
\*Color available on request - *Color disponible bajo pedido*



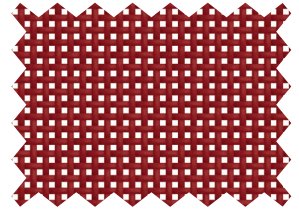
Buttercup  
*Botón de oro* 7407-5017



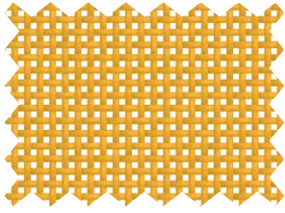
Carrot  
*Zanahoria* 7407-5166



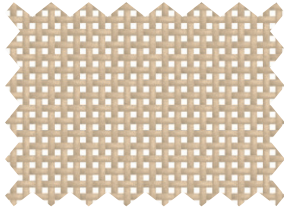
Cherry  
*Cereza* 7407-5011



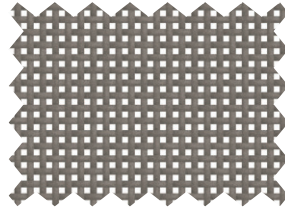
Poppy  
*Amapola* 7407-5350



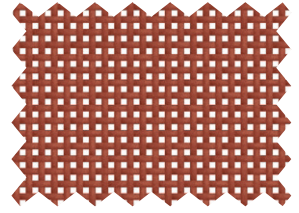
Solar  
*Solar* 7407-50886



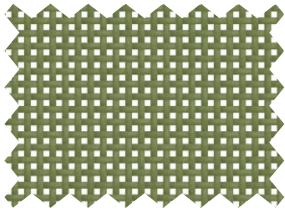
Linen  
*Lino* 7407-5378



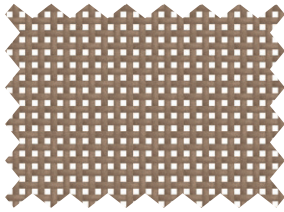
Chestnut  
*Castaño* 7407-50070



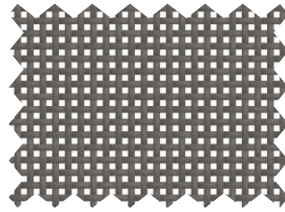
Tomette  
*Ladrillo* 7407-50866



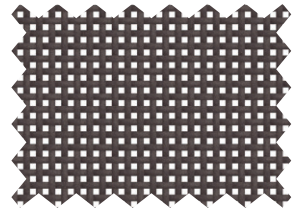
Yucca  
*Yuca* 7407-50885



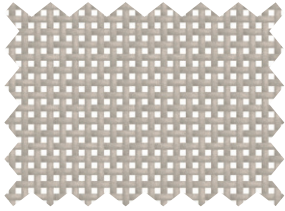
Hazelnut  
*Avellana* 7407-50882



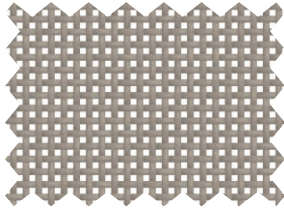
Coffee  
*Café* 7407-5015



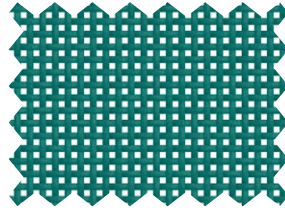
Chocolate  
*Chocolate* 7407-5048



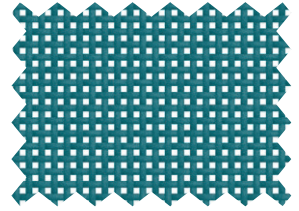
Incense  
*Incienso* 7407-5376



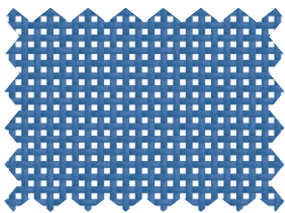
Ash  
*Ceniza* 7407-5014



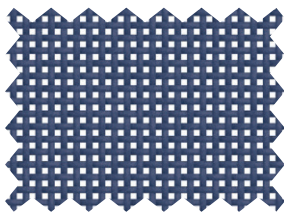
Emerald  
*Esmeralda* 7407-51055\*



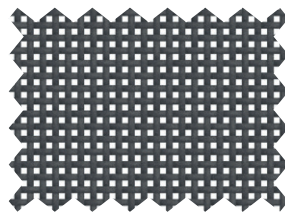
Peacock  
*Pavo real* 7407-50865



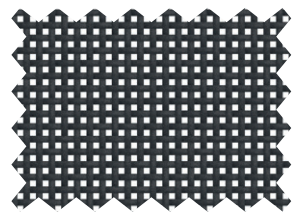
Corn flower  
*Flor de maíz* 7407-5007



Night  
*Noche* 7407-5006



Anthracite grey  
*Gris antracita* 7407-5700



Ebony  
*Ébano* 7407-5005

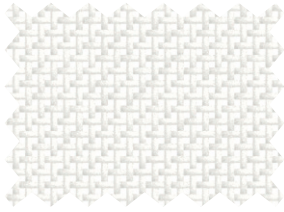
# Batyline Iso FR

Iso FR



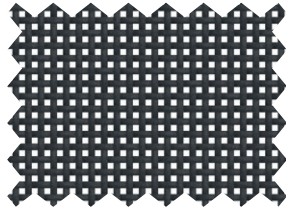
This fabric contains a **28% recycled material** including 100% recycled polyester core yarn.

Este tejido contiene un **28% de material reciclado**, incluido un hilo central de **poliéster 100% reciclado**.



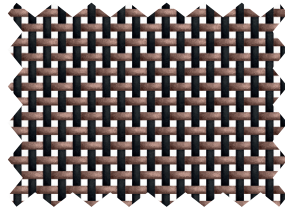
Snow  
Nieve

**7407FR-5001**



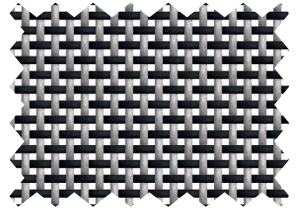
Ebony  
Ébano

**7407FR-5005**



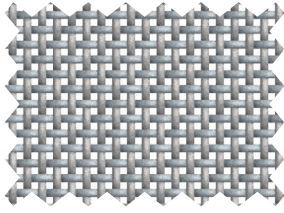
Black copper  
Negro cobre

**7407FR-5266**



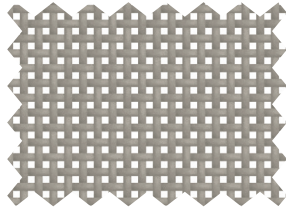
Iron  
Hierro

**7407FR-5261**



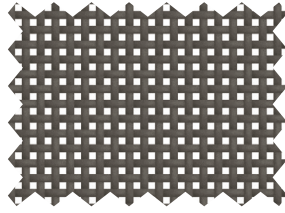
Aluminum  
Aluminio

**7407FR-5260**



Ash  
Ceniza

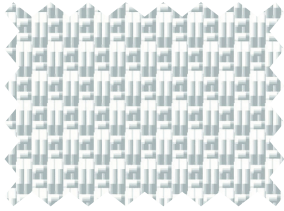
**7407FR-5014**



Coffee  
Café

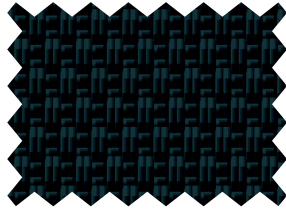
**7407FR-5015**

# Batyline Panama



Snow  
Nieve

**TSR1-5001**



Ebony  
Ébano

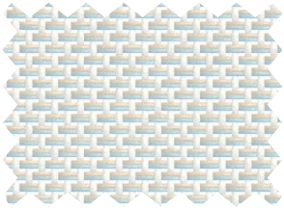
**TSR1-5005**

# Batyline Duo



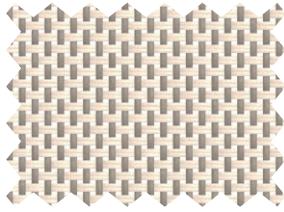
This fabric contains a **25% recycled material** including 100% recycled polyester core yarn.

Este tejido contiene un **25% de material reciclado**, incluido un hilo central de poliéster 100% reciclado.



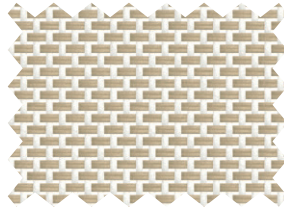
Pearl  
*Perla*

**7300-50879**



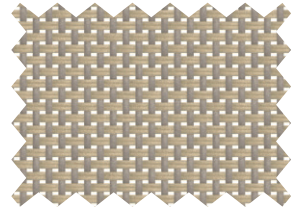
Light beige  
*Beige claro*

**7300-5393**



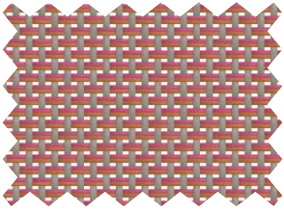
Raffia  
*Raffia*

**7300-5392**



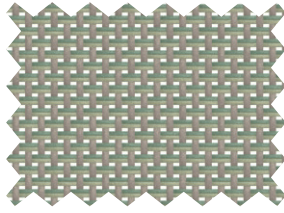
Brown sugar  
*Marrón azúcar*

**7300-5394**



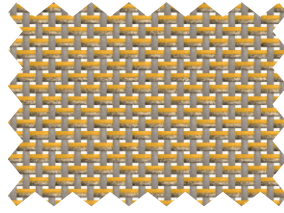
Siena  
*Siena*

**7300-50874**



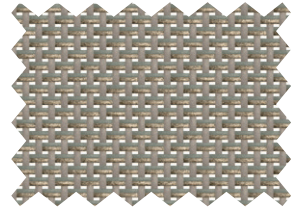
Avocado  
*Aguacate*

**7300-50867**



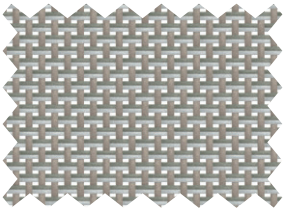
Ginger  
*Jengibre*

**7300-50871**



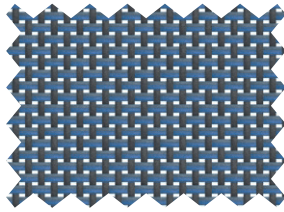
Leather  
*Cuero*

**7300-50872**



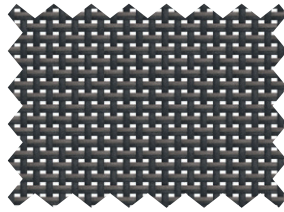
Concrete grey  
*Gris hormigón*

**7300-50868**



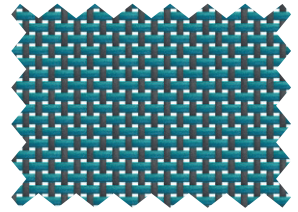
Cruise  
*Crucero*

**7300-50869**



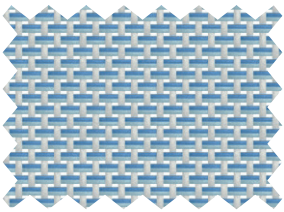
Onyx  
*Ónix*

**7300-5384**



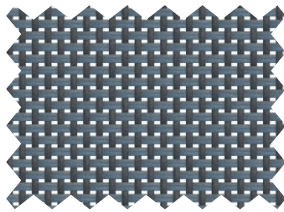
Duck  
*Pato*

**7300-50870**



Sky  
*Cielo*

**7300-51061**



Storm  
*Tormenta*

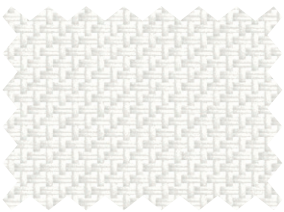
**7300-50890**

# Batyline Duo FR



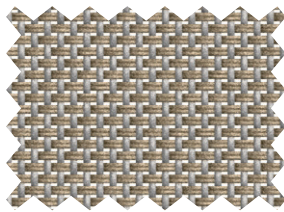
This fabric contains a **25% recycled material** including 100% recycled polyester core yarn.

Este tejido contiene un **25% de material reciclado**, incluido un hilo central de poliéster 100% reciclado.



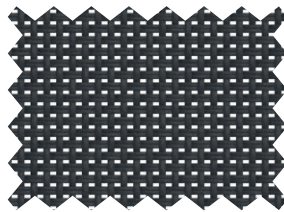
Snow  
*Nieve*

**7300FR-5001**



Ramie  
*Ramie*

**7300FR-5557**



Ebony  
*Ébano*

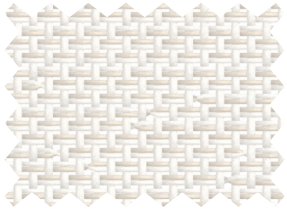
**7300FR-5005**

# Batyline Duo Twist

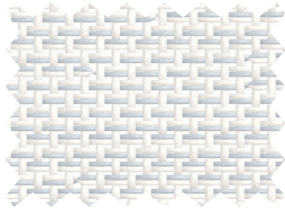


This fabric contains a **25% recycled material** including 100% recycled polyester core yarn.

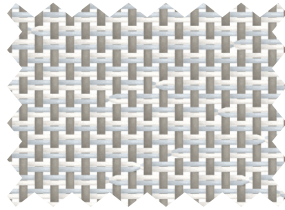
Este tejido contiene un **25% de material reciclado**, incluido un hilo central de **poliéster 100% reciclado**.



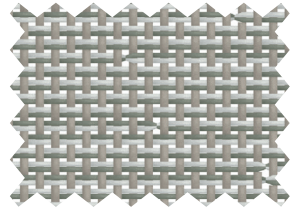
Silica  
Sílice 7301-50877



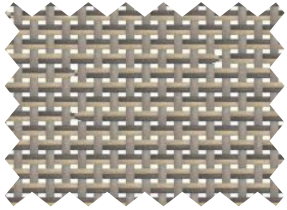
Mist  
Neblina 7301-5396



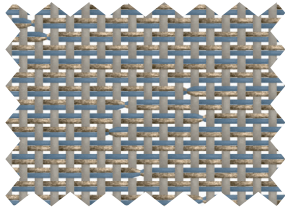
Cloud  
Nube 7301-5397



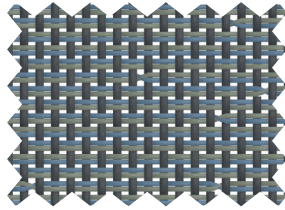
Mineral  
Mineral 7301-50876



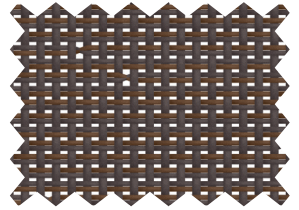
Cappuccino  
Capuchino 7301-5398



Moonstone  
Piedra de luna 7301-50875

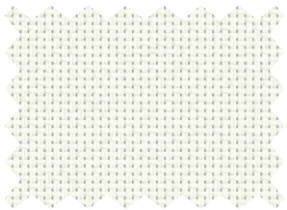


Mica  
Mica 7301-50878

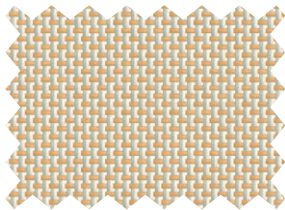


Espresso  
Espresso 7301-5402

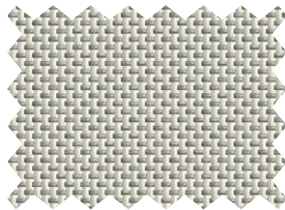
# Batyline Lounge FR



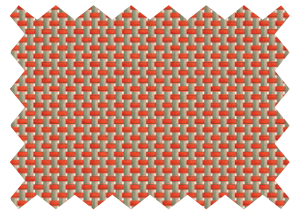
White  
Blanco 7720FR-5701



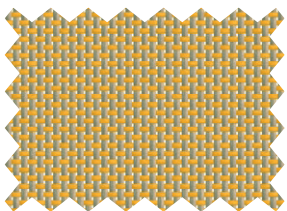
Shea  
Karité 7720FR-50931



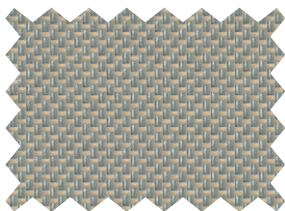
Quartz  
Cuarzo 7720FR-50932



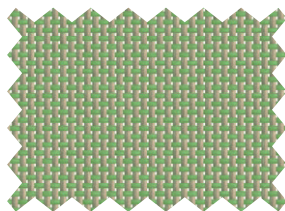
Cheyenne  
Cheyenne 7720FR-50928



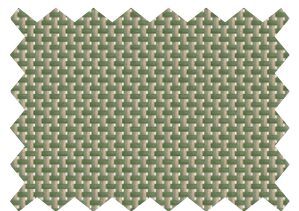
Safran  
Safran 7720FR-50929



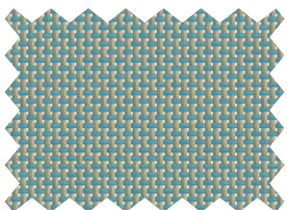
Zinc  
Zink 7720FR-5703



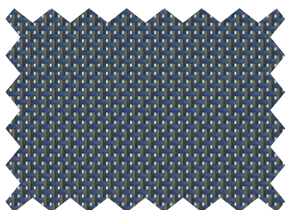
Sage  
Sabia 7720FR-5049



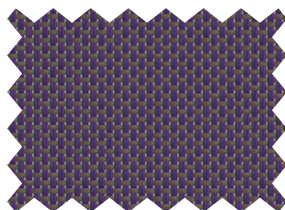
Reed  
Junco 7720FR-50930



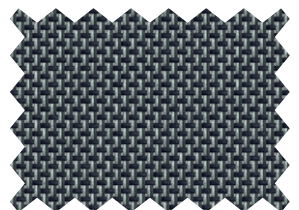
Sea spray  
Spray de mar 7720FR-50934



Abyss  
Abismo 7720FR-50935



Purple  
Púrpura 7720FR-5708\*



Dark aluminum  
Aluminio oscuro 7720FR-5706

These colors are also available on demand in 7721WP Waterproof version.

Estos colores también están disponibles bajo pedido en la versión 7721WP Waterproof.

\*Color available on request - Color disponible bajo pedido

# Batyline | Perform

Batyline Iso*	Batyline Iso FR*	Batyline Panama	Batyline Duo*	Batyline Duo FR*	Batyline Duo Twist*	Batyline Lounge
7407	7407FR	TSR1	7300	7300FR	7301	7720FR

## Technical properties - Características técnicas

					Standards - Normas
Weight - Peso	490 g/m <sup>2</sup> 14.5 oz/sq. yd	850 g/m <sup>2</sup> 25.1 oz/sq. yd	550 g/m <sup>2</sup> 16.2 oz/sq. yd	480 g/m <sup>2</sup> 14.2 oz/sq. yd	EN ISO 2286-2
Width - Ancho	180 cm • 70.9 in				140 cm • 55.1 in
Openess factor Coeficiente de apertura	22%	5%	8%	-	

## Physical properties - Propiedades físicas

Tensile strength (warp/weft) Resistencia a la tracción (urdimbre/trama)	≥240/≥240 daN/5 cm ≥540/≥540 lbs/2 in	≥420/≥340 daN/5 cm ≥944/≥764 lbs/2 in	≥240/≥210 daN/5 cm ≥540/≥472 lbs/2 in	≥150/≥150 daN/5 cm ≥337/≥337 lbs/2 in	EN ISO 1421
Tear strength (warp/weft) Resistencia al desgarro (urdimbre/trama)	-			18/15 daN 40/34 lbs	DIN 53.363
Elongation under load 20 daN (warp/weft) Alargamiento bajo carga 20 daN (urdimbre/trama)	≤2.5%/≤2.5%		≤2%/≤3%		EN ISO 1421
Abrasion resistance Resistencia a la abrasión	>120,000 cycles >120 000 ciclos				EN ISO 12947-2 Martindale
	-			>600,000 double rubs >600 000 frotos doble	ASTM D4157 Wyzenbeek
Mould resistance Resistencia al moho	Methods A, Excellent Metodo A, Excelente				EN ISO 846-A
Extreme working temperatures Temperaturas de trabajo extremas	-30°C / +70°C -22°F / +158°F				
Weather resistance Resistencia a la intemperie	GS≥4 at 1250 h GS≥4 a 1250 h				ASTM G154-UVA 340

## Flame retardancy - Reacción al fuego

Rating Clasificación	-	M2	-	-	-	NF P 92-507
		B1			B1	DIN 4102-1
		Pass Conforme			Pass Conforme	IMO MSC.307(88) (2010 FTP Code) Annex 1 Part 8
	Pass - Conforme			-	Pass - Conforme	CALTB 117
	-	-			Pass - Conforme	NFPA 701
	-				Non ignition Sin ignición	BS 5852:2006, Clause 11, NI/2
Euroclass - Euroclase		B-s2,d0		B-s2,d0	EN 13501-1	

## Management systems - Sistemas de gestión

Quality - Calidad: ISO 9001
-----------------------------

## Certifications, labels, warranty - Certificaciones, etiquetas, garantía

5-year warranty  
5 años de garantía



NO intentionally added PFAS<sup>1</sup>



Phthalate FREE



GREENGUARD



For-Para 7407FR,  
7300FR, 7720FR



STANDARD 100



CQ 693/17 IFTM



DO BETTER WITH LESS<sup>2</sup>

<sup>1</sup>These products don't contain intentionally added PFAS (these products were not formulated or intended to contain a PFAS that impacts a specific function or characteristic to the product).

<sup>1</sup>Estos productos no contienen PFAS añadidos intencionadamente (estos productos no fueron formulados o destinados a contener un PFAS que repercuta en una función o característica específica del producto).

<sup>2</sup>Summarizes the group's CSR project focused on human, to align economic performance and positive impact.

<sup>2</sup>Resume el proyecto de RSC del grupo centrado en lo humano, para alinear rendimiento económico e impacto positivo.

A customisation service is available under certain conditions, please contact your local sales representative for more information. Quoted technical characteristics are average values with a +/-5% tolerance (\*Batyline ISO & DUO recycled +/-10% tolerance). Our products are subject to improvements resulting from technical developments and we reserve the right to modify their characteristics at any time. The purchaser of our products is responsible for checking the above data. A maintenance and spot cleaning guide is available on request. The colors and textures presented are included for information only.

Existe un servicio de personalización bajo ciertas condiciones, póngase en contacto con su representante de ventas local para obtener más información. Las características técnicas indicadas son valores medios con una tolerancia de +/-5% (\*Batyline ISO & DUO reciclados +/-10% tolerancia). Nuestros productos están sujetos a mejoras derivadas del desarrollo técnico y nos reservamos el derecho de modificar sus características en cualquier momento. El comprador de nuestros productos es responsable de comprobar los datos anteriores. Se puede solicitar una guía de mantenimiento y limpieza de manchas. Los colores y texturas presentadas están dadas a título indicativo.