

# Batyline

[Stam]Skin

Marine  
collection

Collezione  
nautica





# Batyline | Marine Collection



## [Stam]Skin Top & Club

**Easy:** high flexibility of the material for a perfect upholstery quality

**Easy:** *elevata flessibilità del materiale per una perfetta qualità di rivestimento*

**Colourful:** a large palette of neutral and vibrant colours

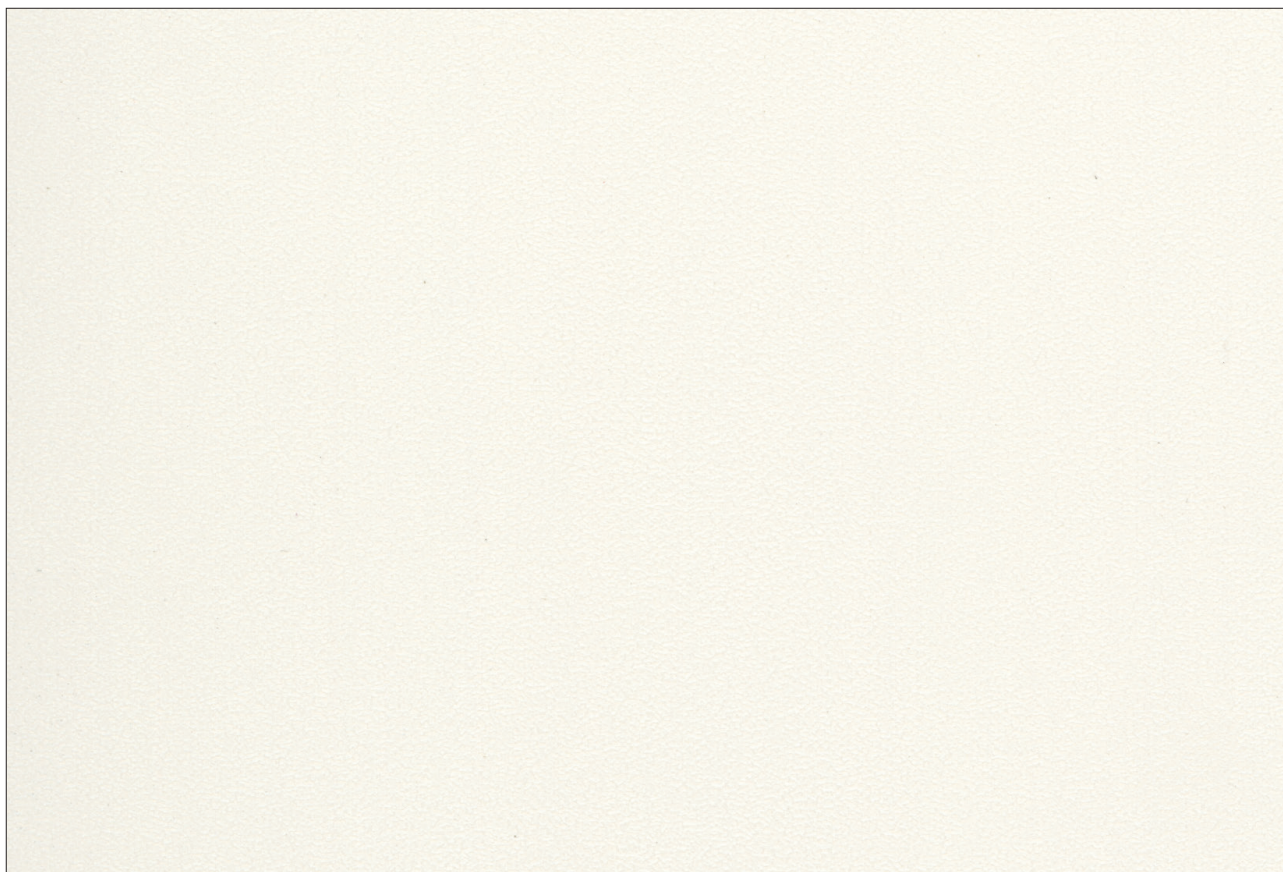
**Colorato:** *un'ampia palette di colori neutri e vibranti*

**Elegant:** a classic leather grain for a timeless chic design

**Elegante:** *una pelle dalla grana classica per un design chic e senza tempo*

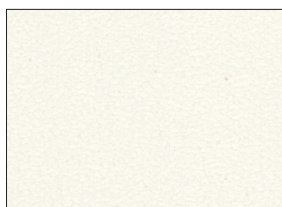
# Batyline [Stam]Skin

Top



Marble  
Marmo

F4340-10120



Marble  
Marmo

F4340-10120



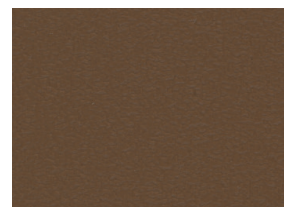
Mist  
Nebbia

F4340-20161



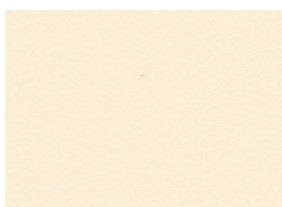
Baltic  
Baltico

F4340-20290\*



Alezan  
Castagna

F4340-20286



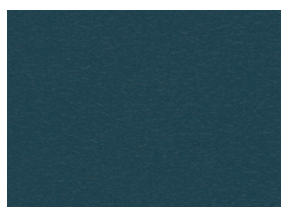
Sand  
Sabbia

F4340-5029



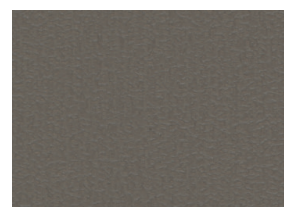
Turquoise  
Turchese

F4340-20294



Oslo  
Blu oslo

F4340-20289



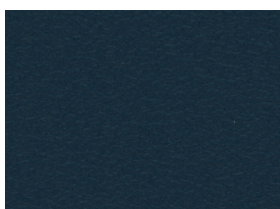
Taupe  
Talpa

F4340-20237



Capri  
Capri

F4340-20288



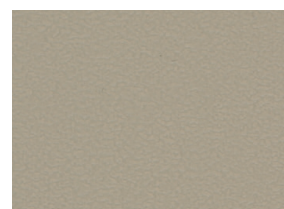
Adriatic  
Blu Adriatico

F4340-20284



Golden  
Oro

F4340-20281



Sahara  
Sahara

F4340-20279

More colors available on demand - *Altri colori disponibili su richiesta*  
\*Color available on request - *Colore disponibile su richiesta*

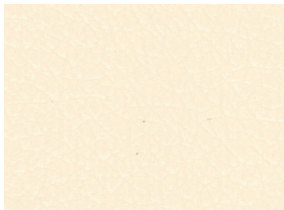
# Batyline [Stam]Skin

## Club



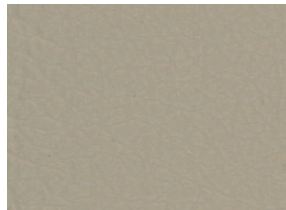
Taupe  
*Talpa*

F4340-20237P



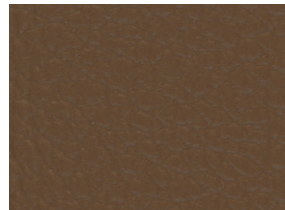
Sand  
*Sabbia*

F4340-5029P



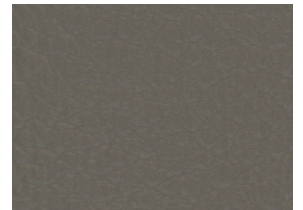
Sahara  
*Sahara*

F4340-20279P



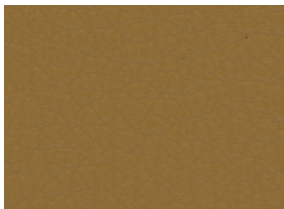
Alezan  
*Castagna*

F4340-20286P



Taupe  
*Talpa*

F4340-20237P



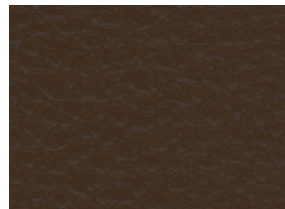
Golden  
*Oro*

F4340-20281P\*



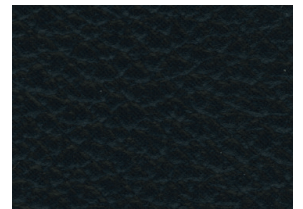
Adriatic  
*Blu Adriatico*

F4340-20284P



Brandy  
*Brandy*

F4340-20278P



Black  
*Nero*

F4340-00002P

All colors available in F4340 Top - *Tutti i colori sono disponibili in F4340 Top*

More colors available on demand - *Altri colori disponibili su richiesta*

\*Color available on request - *Colore disponibile su richiesta*

# Batyline | Marine Collection

Batyline  
[Stam]Skin Top  
F4340

Batyline  
[Stam] Skin Club  
F4340

## Technical properties - Proprietà tecniche

## Standards - Norme

Composition - <i>Composizione</i>	Multi-layer composite - <i>Composito multistrato</i>	
Base cloth - <i>Tessuto di base</i>	Polyamide-jersey - <i>Maglia in poliammide</i>	
Width - <i>Altezza dei rotoli</i>	140 cm • 55.1 in	
Weight - <i>Peso</i>	780 g/m <sup>2</sup> • 23 oz/sq. yd	EN ISO 2286-2
Thickness - <i>Spessore</i>	1.0 mm – 1.2 mm • 1,000 microns - 1,200 microns	EN ISO 5084

## Physical properties - Proprietà fisiche

Elongation under load 125 N/5 cm (warp/weft) <i>Allungamento sotto carico 20 daN (ordito/trama)</i>	>35% / >55%	EN ISO 1421
Tensile strength (warp/weft) <i>Resistenza alla rottura (ordito/trama)</i>	>440 N/5 cm / >280 N/5 cm 96.9/62.9 lbs/2 in	
Tear strength (warp/weft) <i>Resistenza allo strappo (ordito/trama)</i>	≥25 N / ≥15 N ≥6 lbs / ≥3 lbs	EN ISO 13937-1
Flexing resistance <i>Resistenza alla flessione</i>	400,000 cycles 400 000 cicli	EN ISO 7854
Abrasion resistance <i>Resistenza all'abrasione</i>	>120,000 cycles >120 000 cicli	EN ISO 5470-2 Martindale
Weather resistance <i>Resistenza agli agenti atmosferici</i>	GS=4/5 for 700 h GS=4/5 per 700 h	ASTM G154
Mold resistance - <i>Resistenza alle muffe</i>	Degree 0, excellent - <i>Grado 0, eccellente</i>	EN ISO 846-A
Extreme working temperatures <i>Temperature estreme di utilizzo</i>	-20°C / +70°C • -4°F / +158°F	

## Flame retardancy - Resistenza al fuoco

Rating <i>Classificazione</i>	US	Pass - <i>Conforme</i>	NFPA 260
		Class 1 - <i>Classe 1</i>	CAL TB 117
	IT	-	UNI 9175
		Class 2 - <i>Classe 2</i>	UNI 9177-87
	CH	5.3	SN 198898 - VKF/AEAI
	DE	Class F1 - <i>Classe F1</i>	DIN 53438-3
	FR	M2	NFP 92.507
	UK	Pass - <i>Conforme</i>	CRIB 5 BS 5852
		Pass - <i>Conforme</i>	AS / NZS 1530-3
	AU	Group 2 - <i>Gruppo 2</i>	AS/NZS 3837
Cigarette / match test <i>Test sigaretta / fiammifero</i>	No fire <i>Nessuna ignizione</i>	EN 10211&2	
Marine test <i>Test nautico</i>	Pass <i>Conforme</i>	IMO MSC.307(88) (2010FTP Code) Annex 1 Part 8	

## Management system - Sistema di gestione

Quality - *Qualità*: ISO 9001 • Environment - *Ambiente*: ISO 14001

## Certifications, labels, warranties - Certificazioni, etichette, garanzia

5-year warranty  
*5 anni di garanzia*

Smart coating technology  
*Tecnologia Smart coating*



<sup>1</sup> These products don't contain intentionally added PFAS (these products were not formulated or intended to contain a PFAS that impacts a specific function or characteristic to the product).  
*<sup>1</sup> Questi prodotti non contengono PFAS aggiunti intenzionalmente (questi prodotti non sono stati formulati o destinati a contenere un PFAS che influisce su una funzione o caratteristica specifica del prodotto).*

<sup>2</sup> Summarizes the group's CSR project focused on human, to align economic performance and positive impact.

*<sup>2</sup> Riassume il progetto di CSR del gruppo incentrato sulle persone, per allineare i risultati economici e l'impatto positivo.*

The technical characteristics provided are average values with a tolerance of +/- 5%. Our products are subject to change to keep pace with technical advancement and we reserve the right to modify their characteristics at any time. Purchasers of our products must verify that the characteristics shown above are suitable for their purposes. To make a claim under the terms of the warranty, consult the terms of the warranty in question, available upon request. The transfer of coloring agents such as those contained in pens, clothes or accessories (jeans, dark clothes) are not covered by the warranty. Upkeep instructions: simply use a brush and soapy water, to be followed by rinsing with clean water. Avoid the use of stain removers containing solvents or oily products. We recommend the use of Serge Ferrari Cleaner 500. Implementation: all usual furniture manufacturing processes involving sewing, stapling, gluing, nailing, etc. Do not use glues containing solvents. The colors and textures presented are included for information only.

*Le caratteristiche tecniche fornite sono valori medi con una tolleranza del +/- 5%. I nostri prodotti sono soggetti a modifiche per tenere il passo con il progresso tecnico e ci riserviamo il diritto di modificarne le caratteristiche in qualsiasi momento. Gli acquirenti dei nostri prodotti devono verificare che le caratteristiche sopra indicate siano adatte ai loro scopi. Per presentare un reclamo secondo i termini della garanzia, consultare i termini della garanzia in questione, disponibili su richiesta. Il trasferimento di coloranti come quelli contenuti in penne, vestiti o accessori (jeans, abiti scuri) non sono coperti dalla garanzia. Istruzioni per la manutenzione: utilizzare semplicemente una spazzola e acqua saponata, per poi risciacquare con acqua pulita. Evitare l'uso di smacchiatori contenenti solventi o prodotti oleosi. Si consiglia l'uso di Serge Ferrari Cleaner 500. Implementazione: tutti i consueti processi di produzione di arredamento che prevedono cuciture, cuciture, incollaggi, inchiodature, ecc. Non utilizzare colle contenenti solventi. I colori e le texture presentati sono inclusi solo a titolo informativo.*

**Serge Ferrari**  
group

sergeferrargroup.com

Batyline is a Serge Ferrari SAS registered trademark.  
Batyline è un marchio registrato di Serge Ferrari SAS.  
Ref. SCYACBATSKINENT • 03/2026

EN-IT

Photo credits - Crediti foto: ©Stéphane Rambaud, ©Matthieu Latry